

FIG 6.1 TRANSCEIVER LAYOUT DIAGRAM

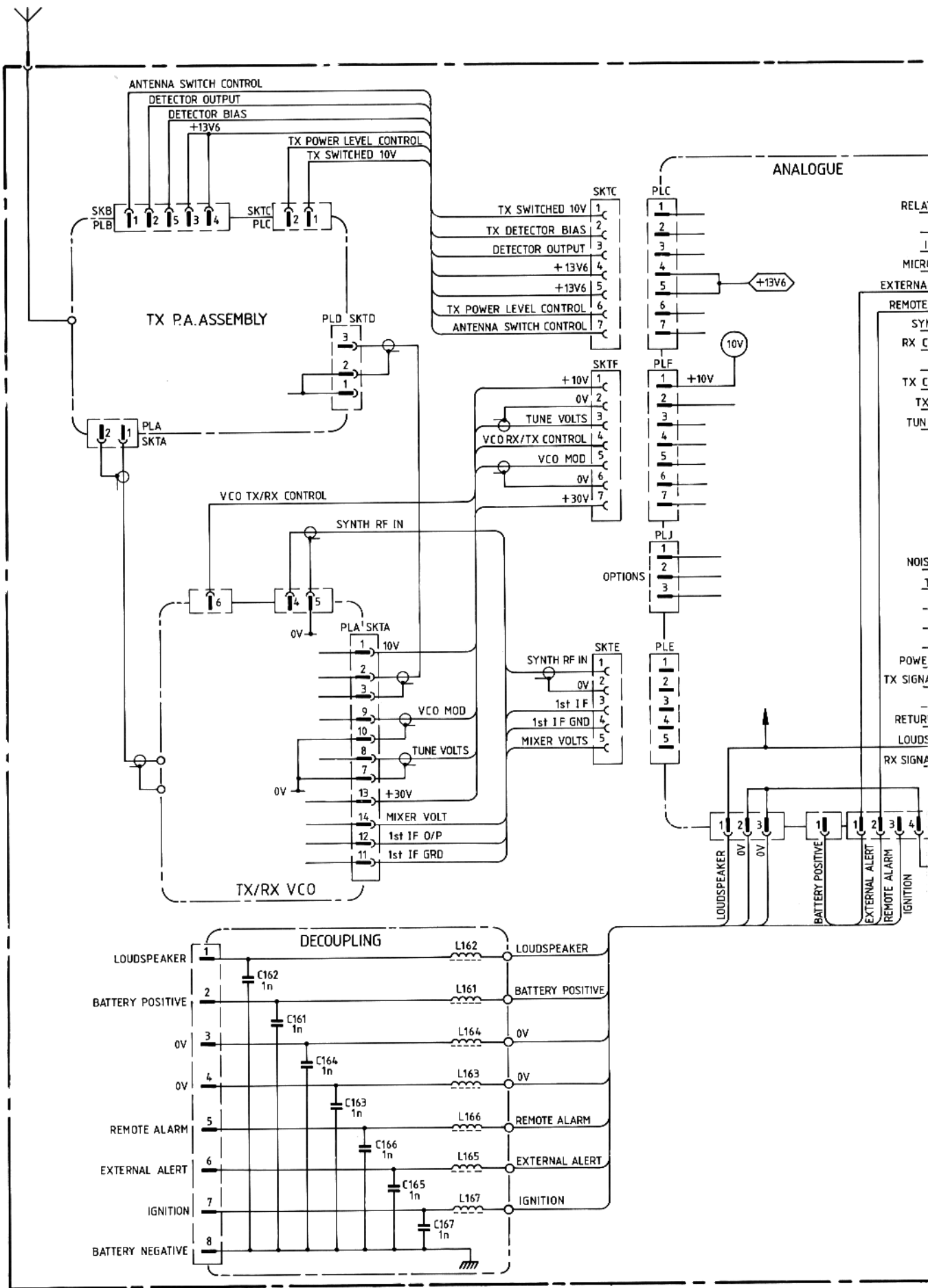
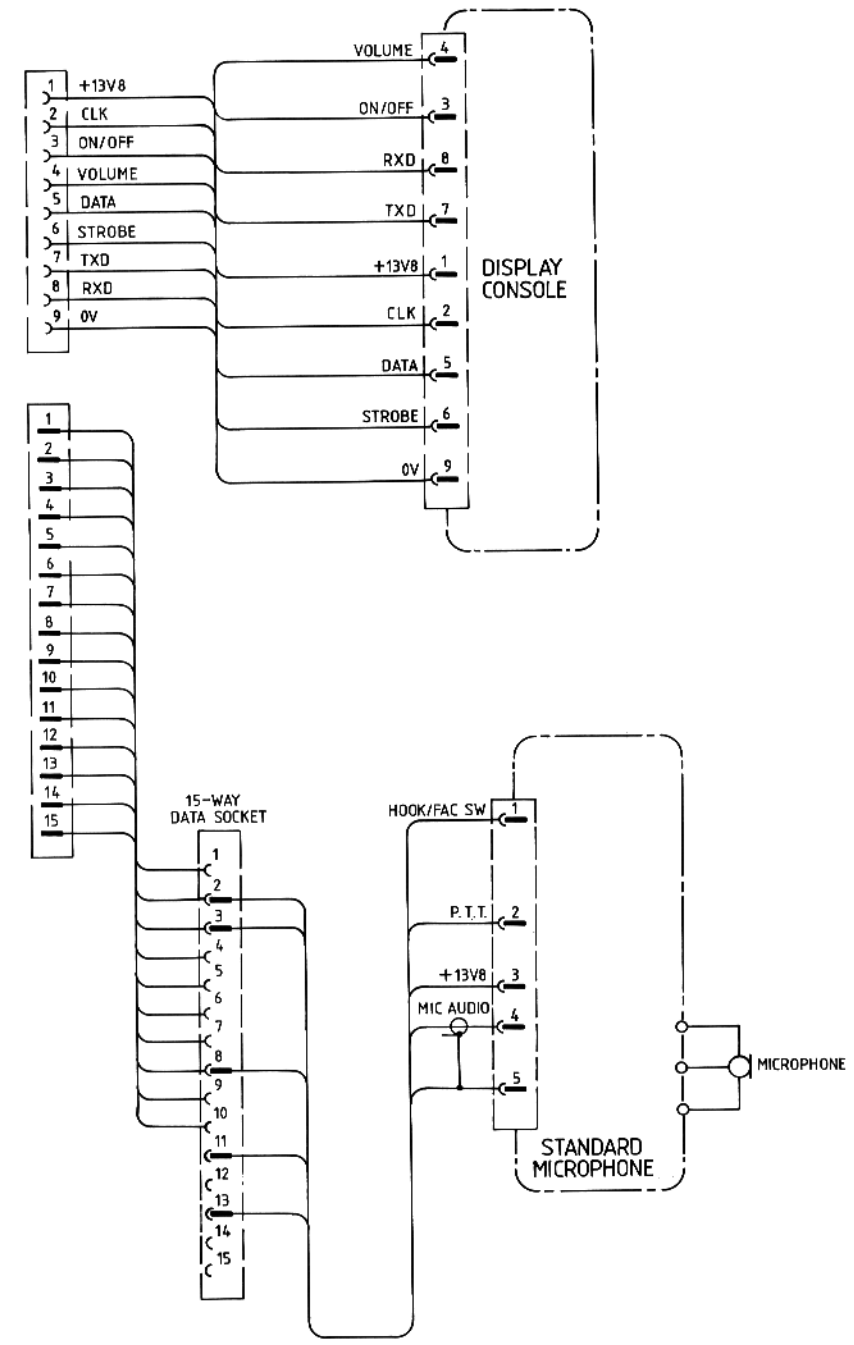
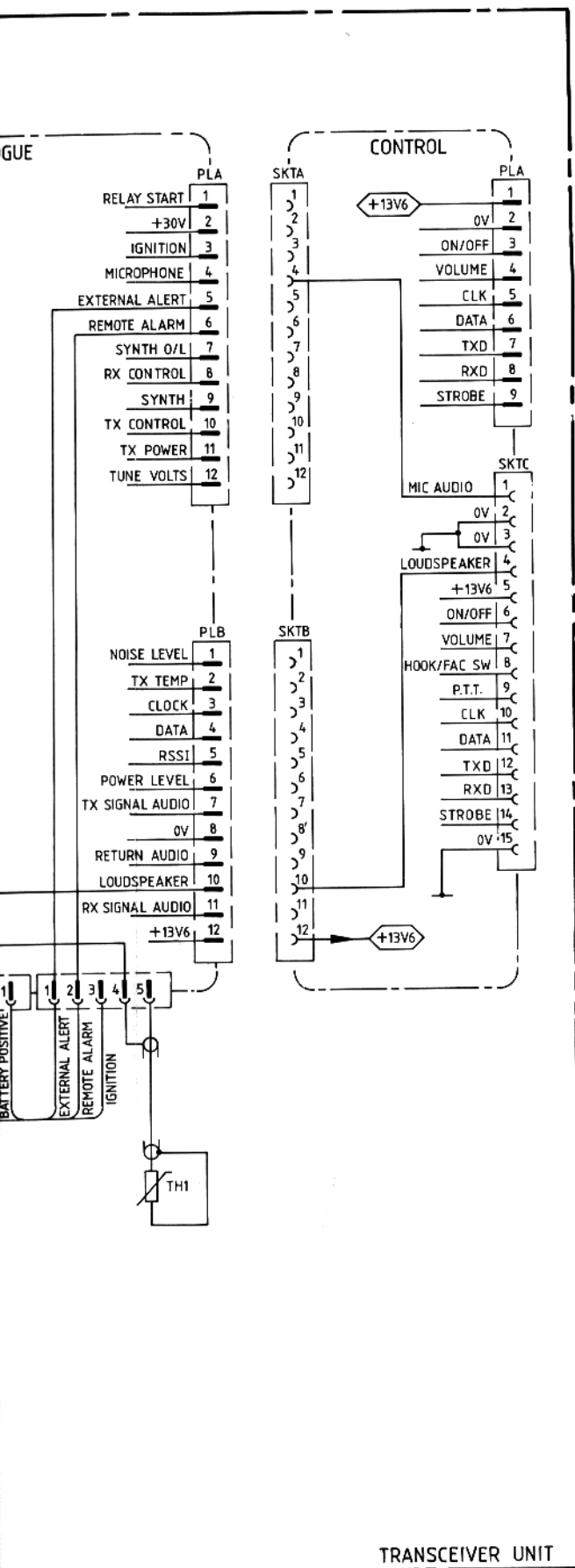


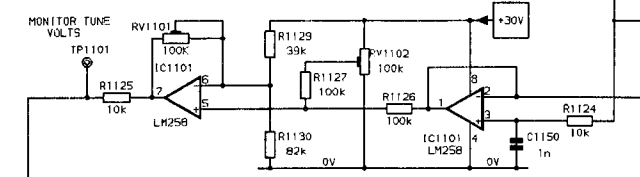
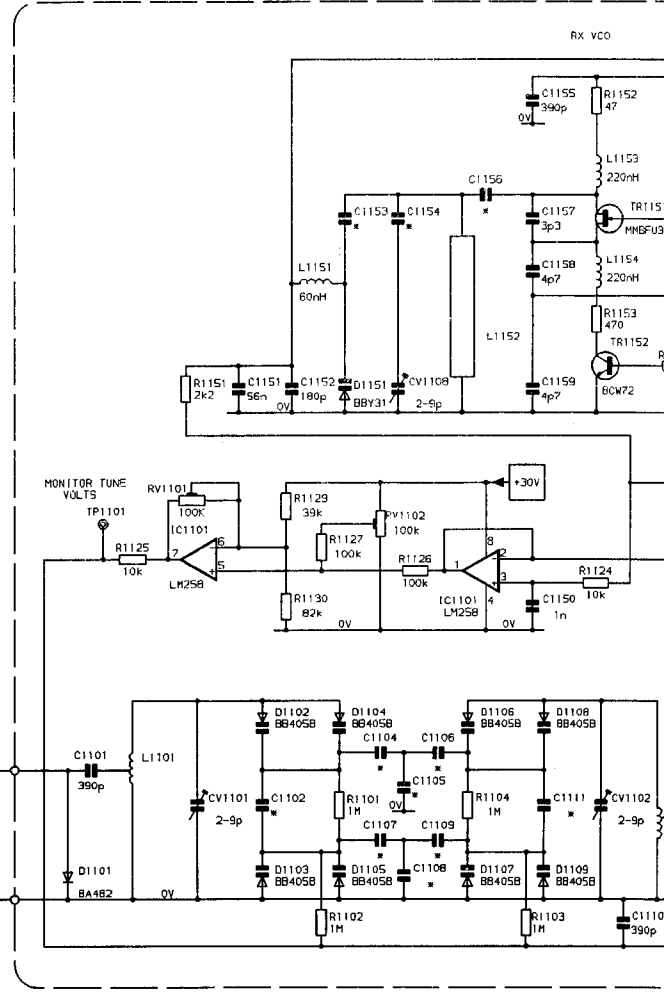
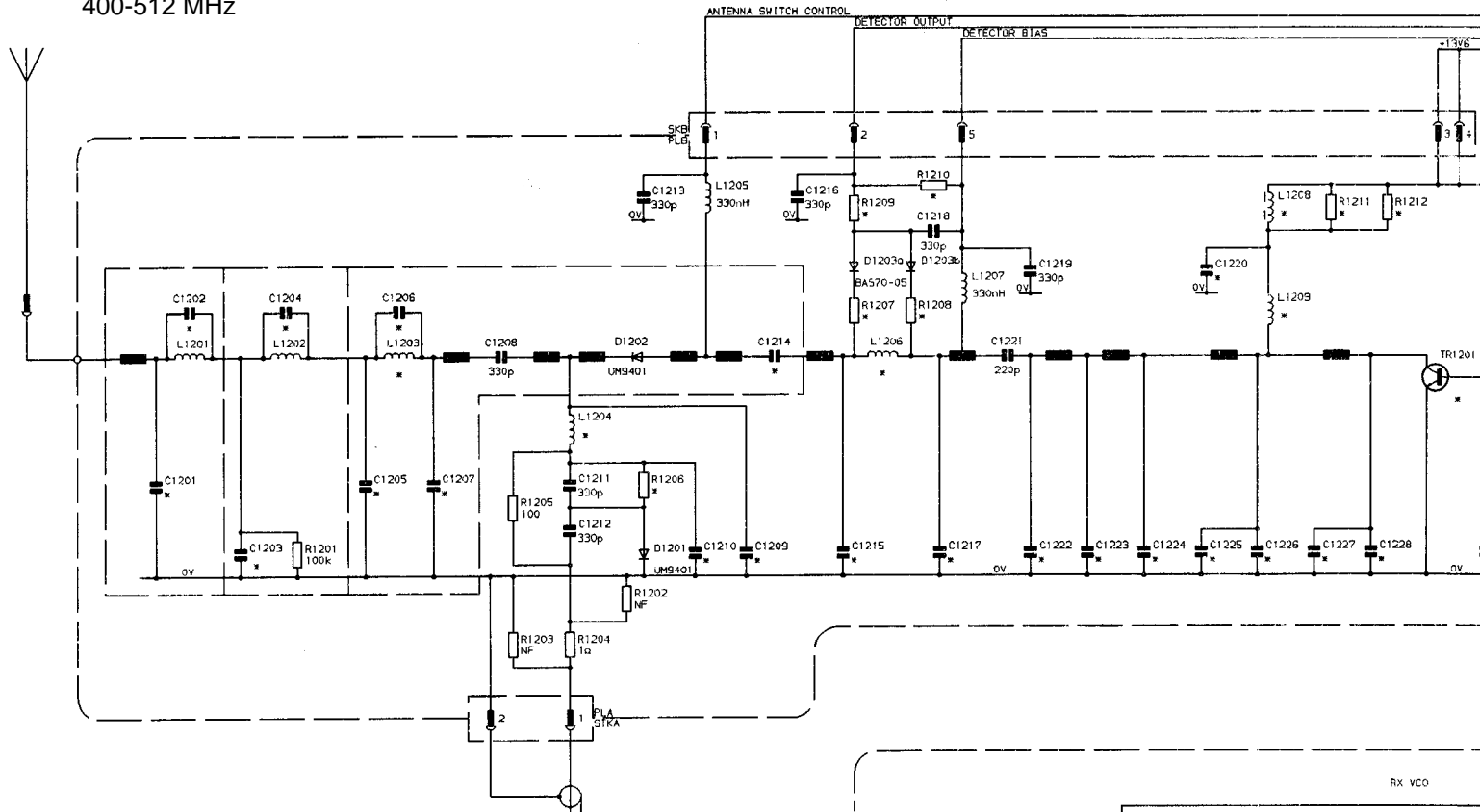
FIG 6.2 TRANSCEIVER INTERCONNECTION DIAGRAM

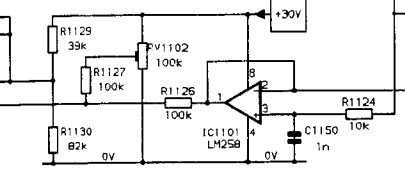
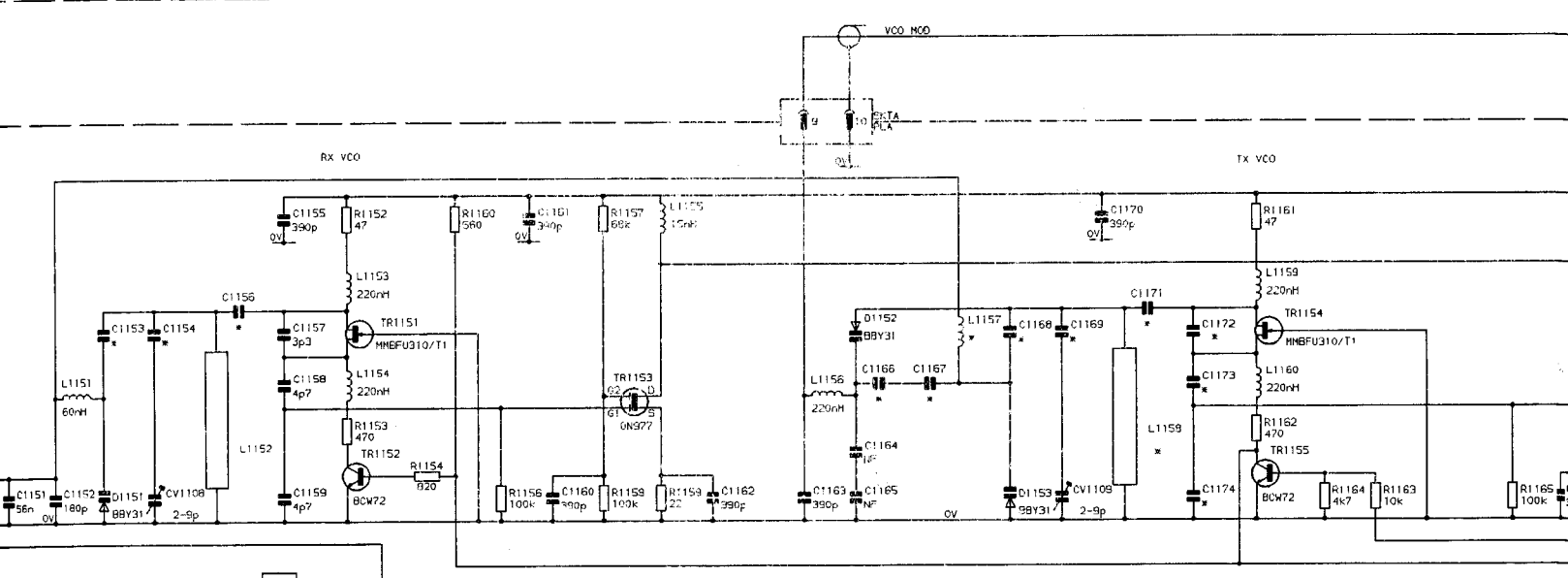
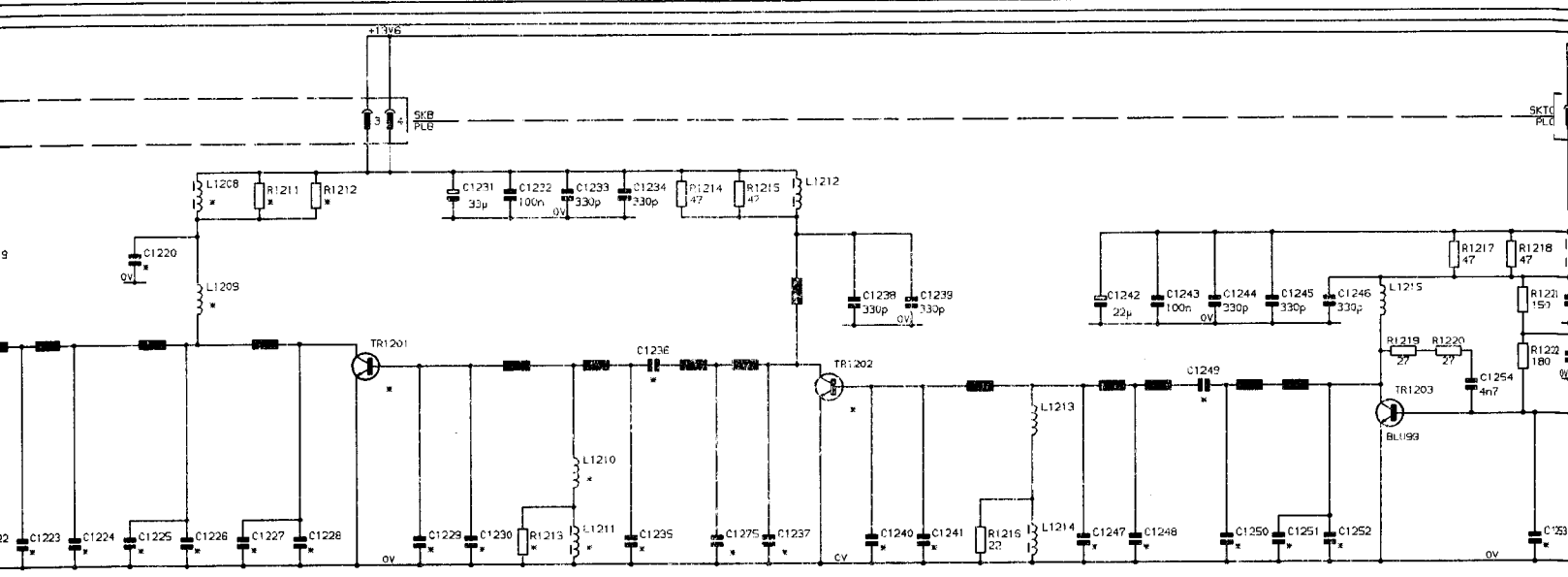


TRANSCEIVER UNIT

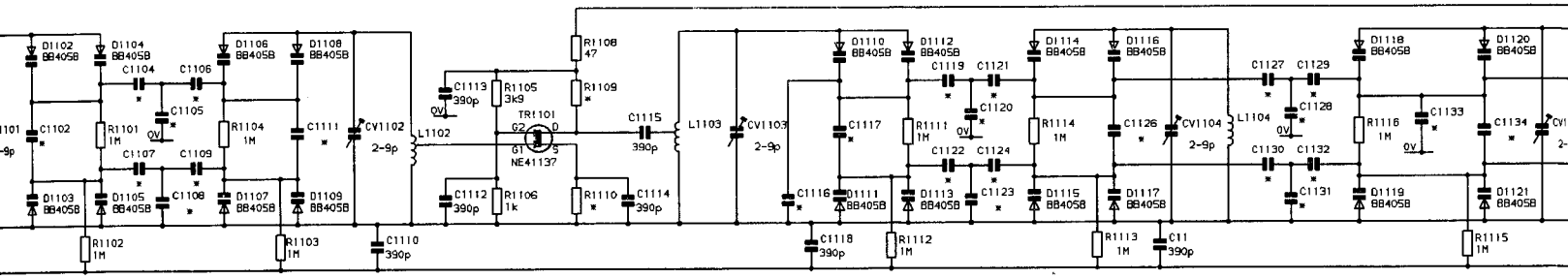
A1 06524

400-512 MHz





TUNING DIODES D1102-D1125, D1127, D1128, D1130 ARE MATCHED



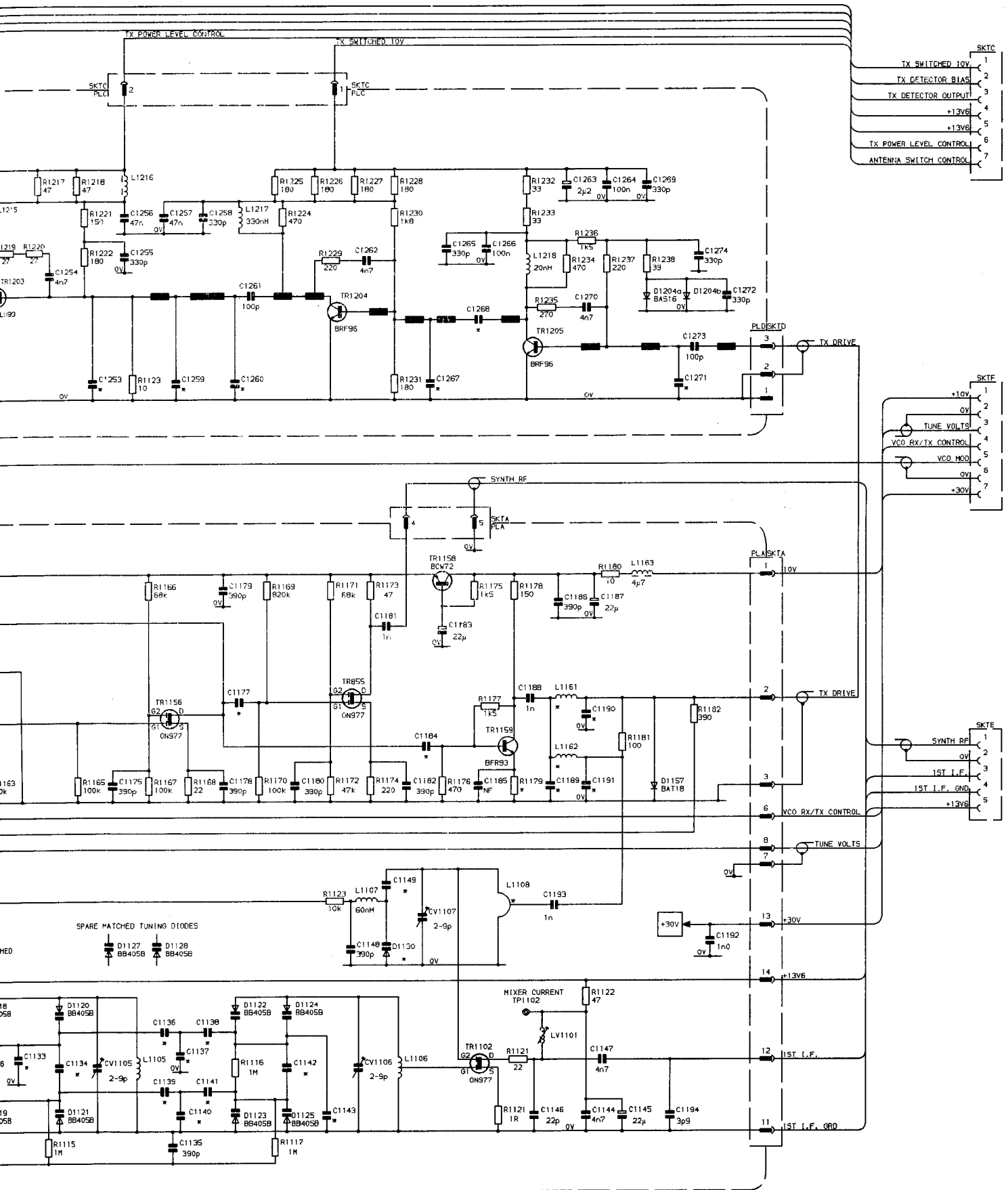
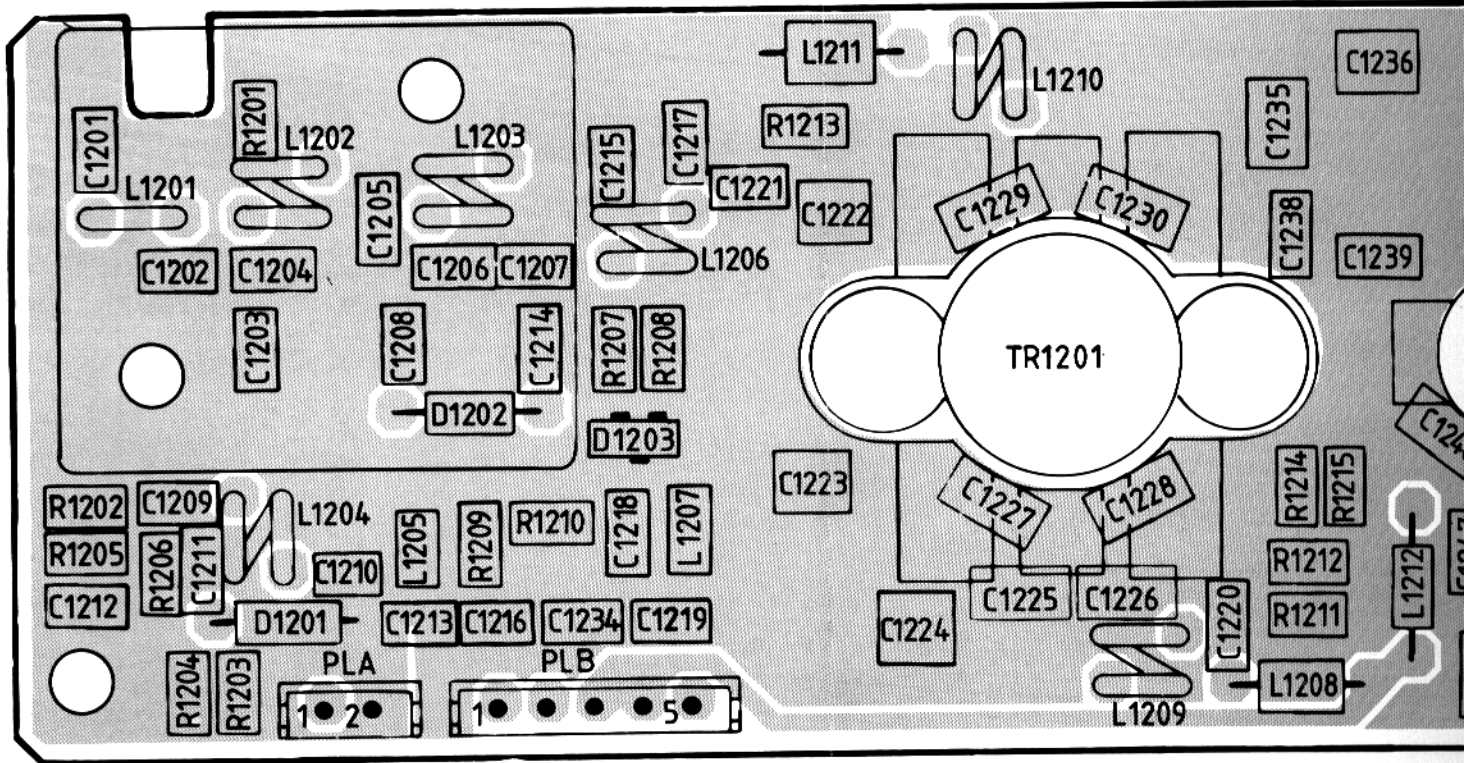
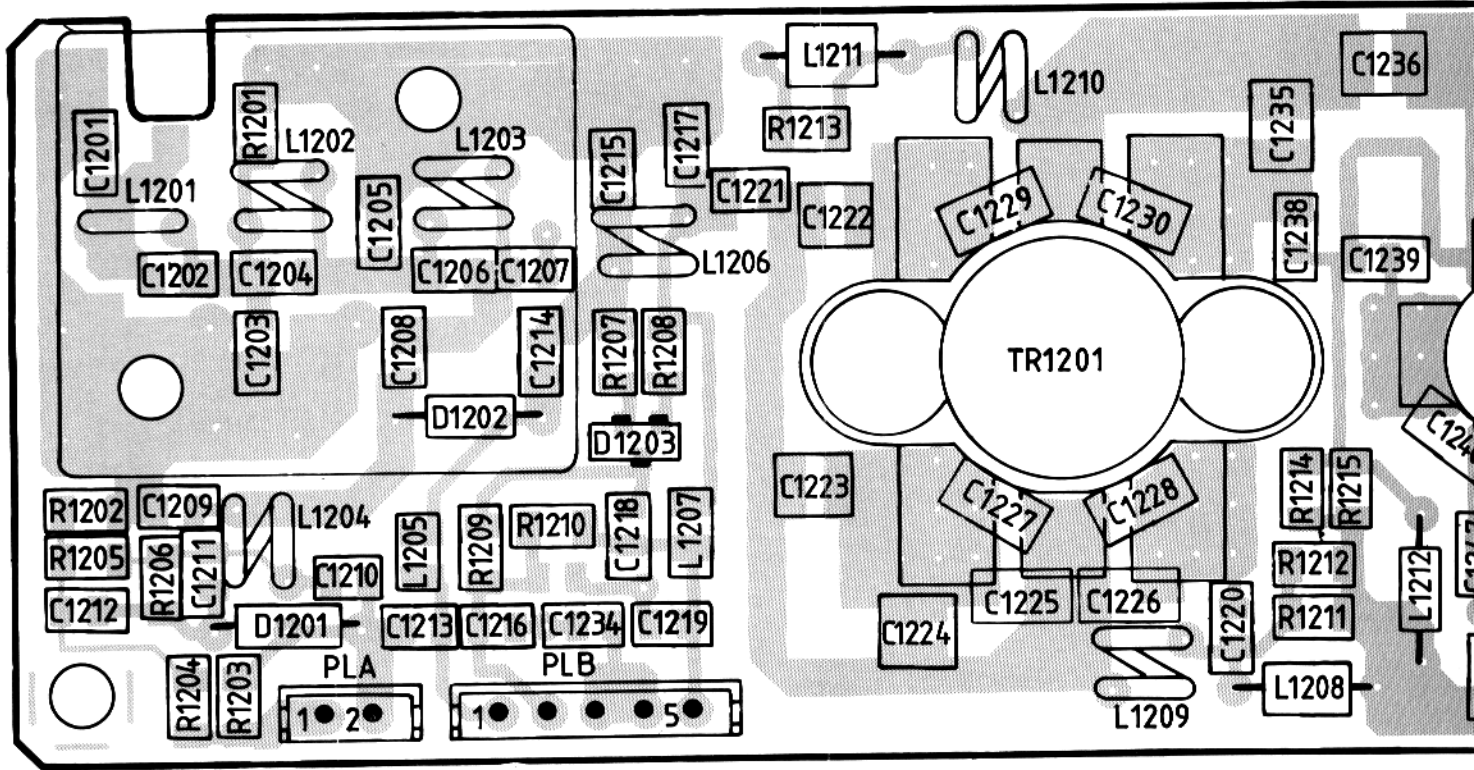
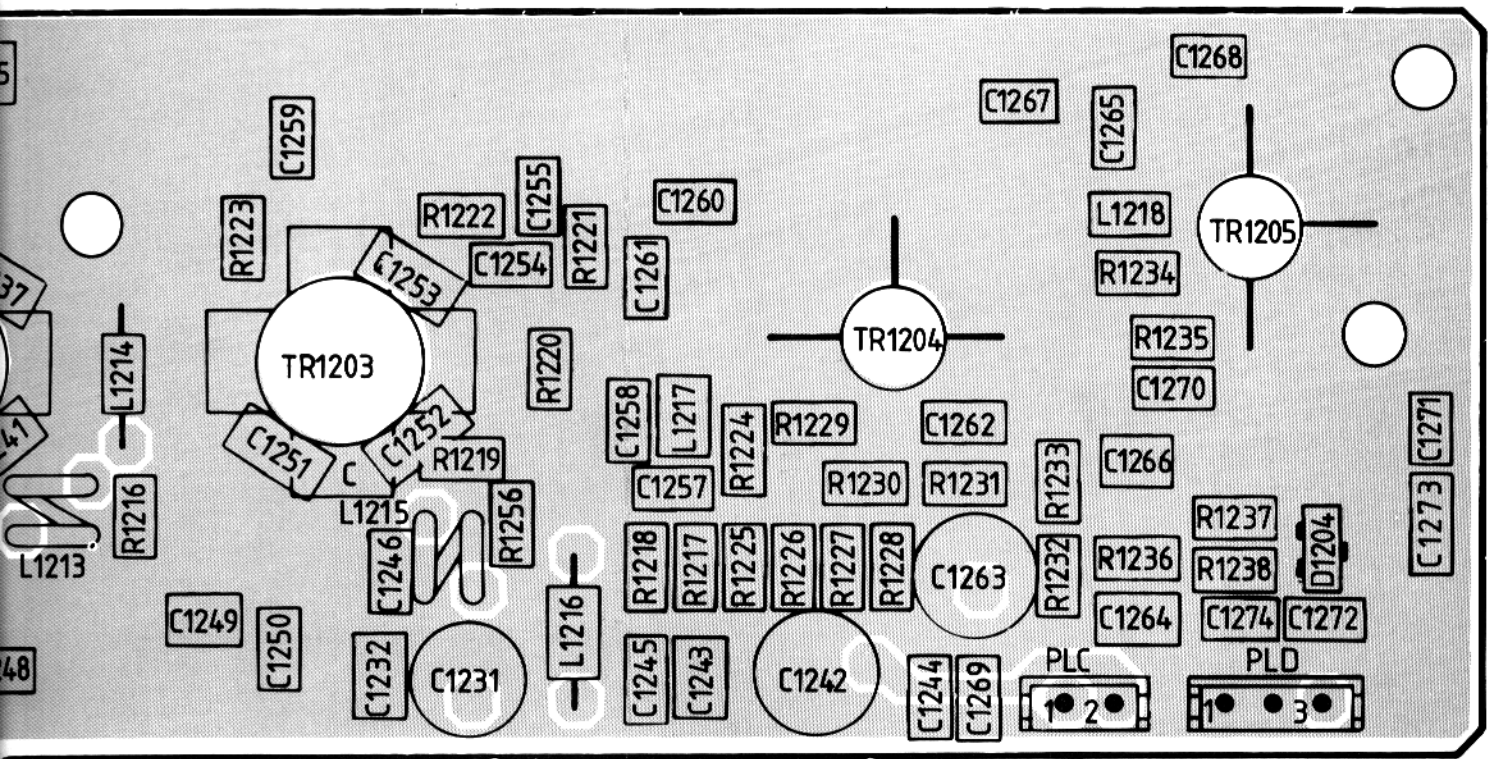
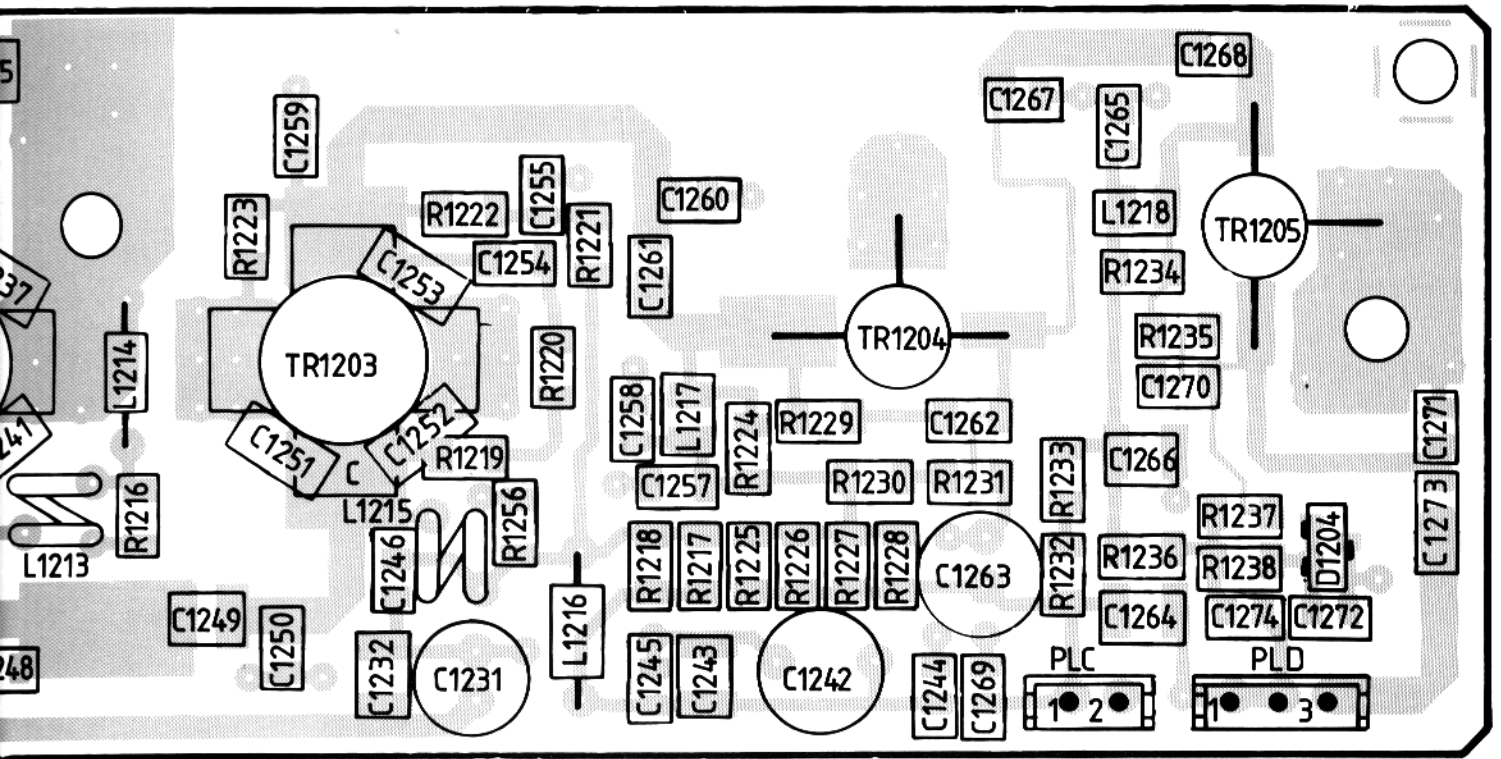


FIG 6.11A RF CIRCUIT DIAGRAM (400-512MHz)



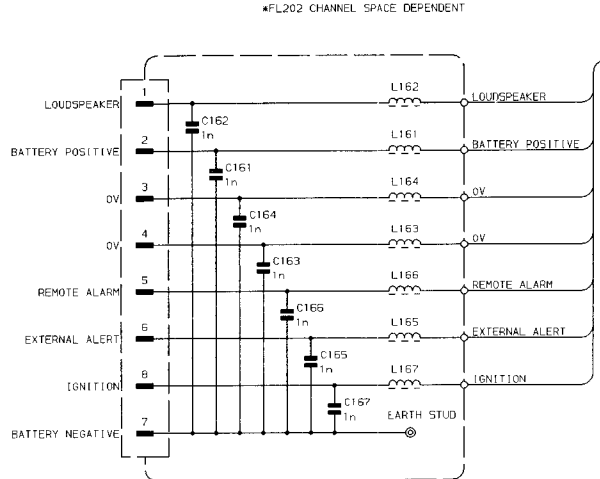
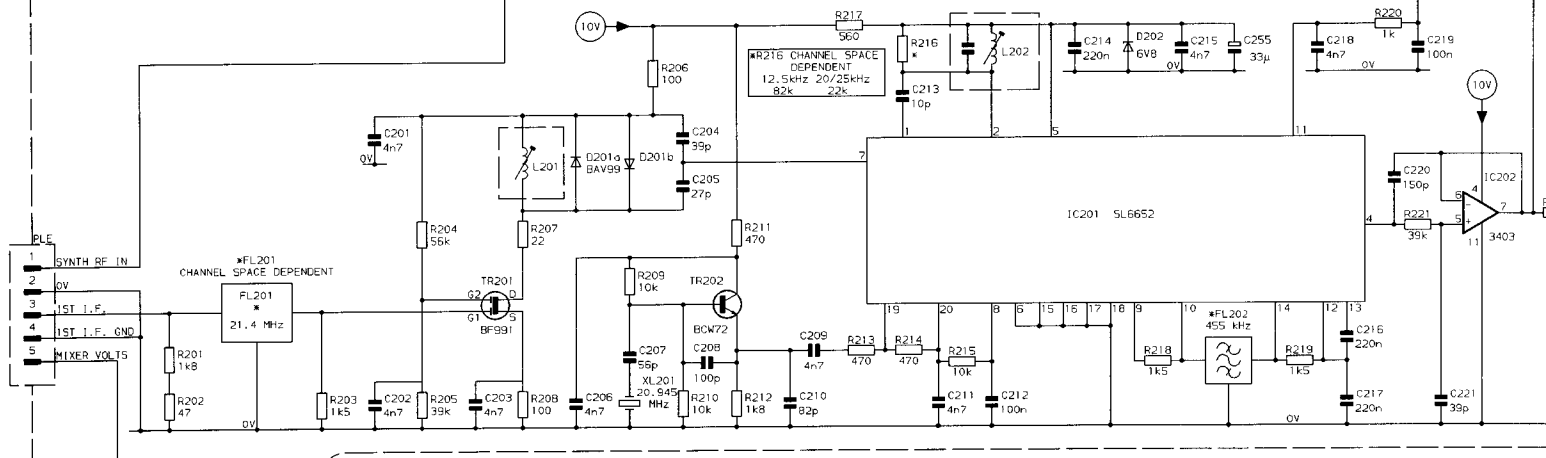
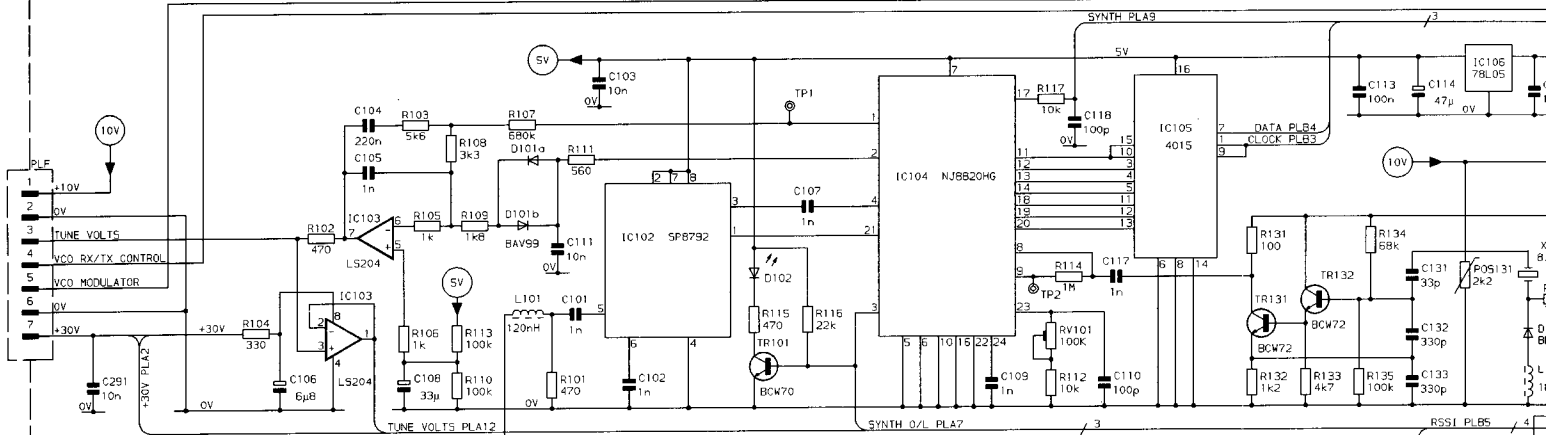
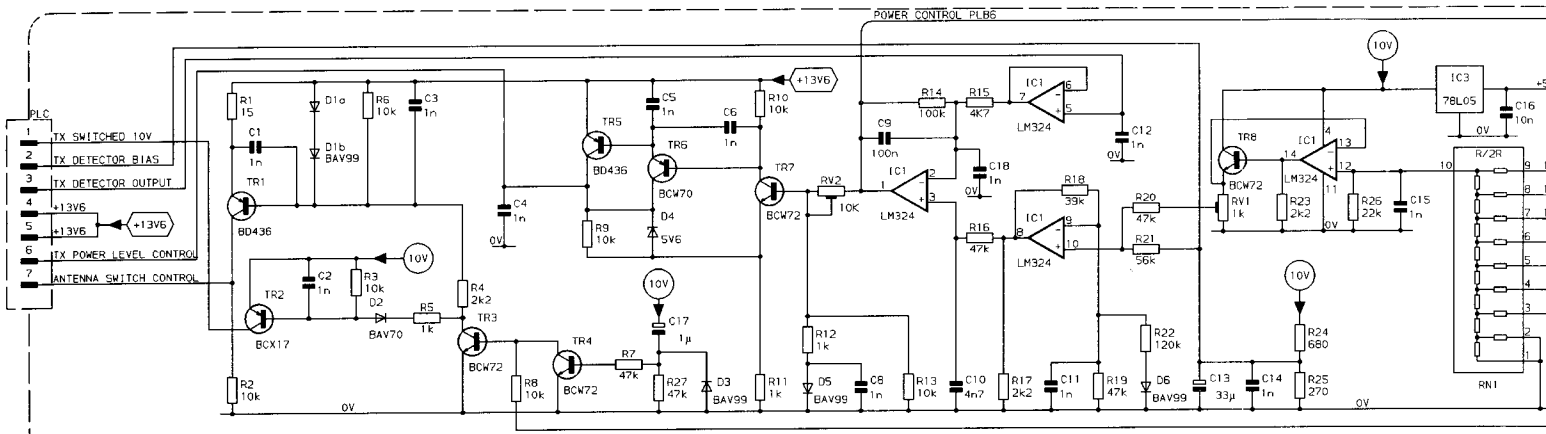




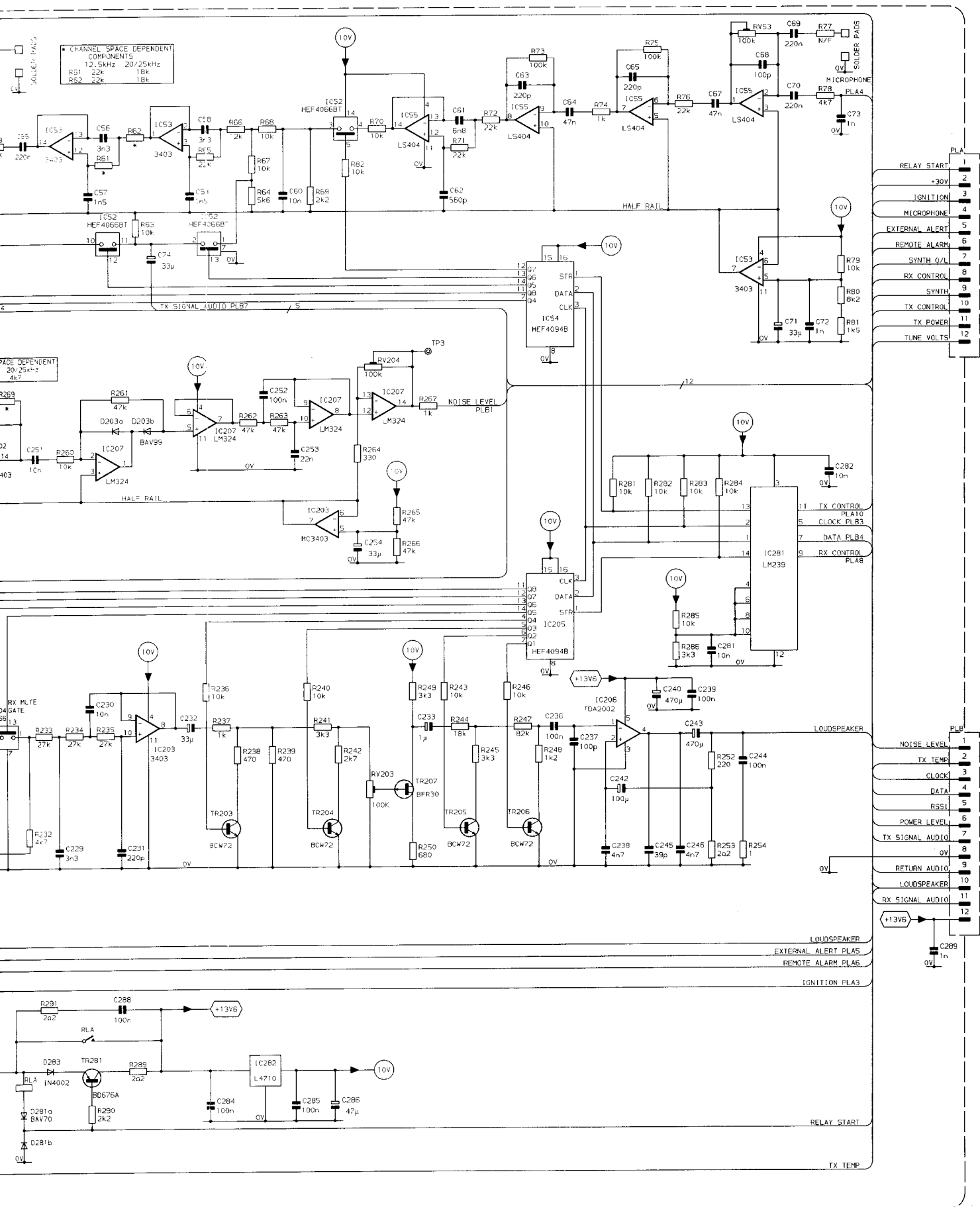


A2 E6535

FIG 6.11B TRANSM LOCATI





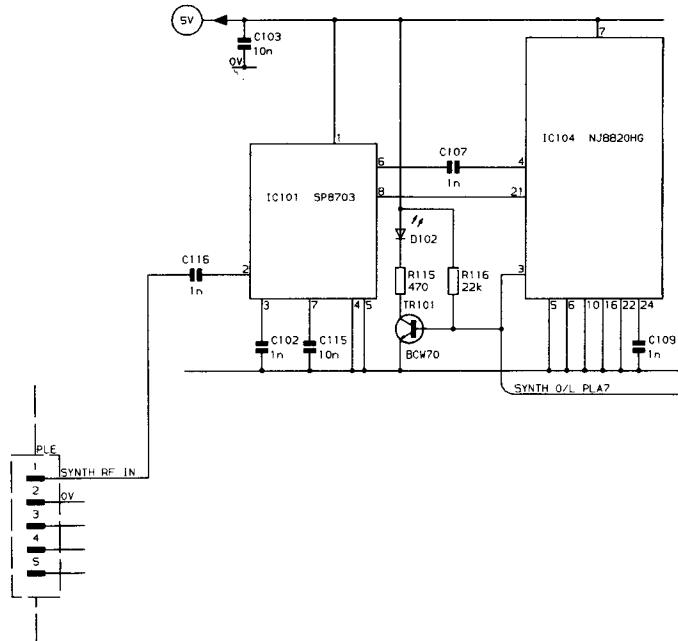


RELAY START	1
+30V	2
IGNITION	3
MICROPHONE	4
EXTERNAL ALERT	5
REMOTE ALARM	6
SYNTH O/L	7
RX CONTROL	8
SYNTH	9
TX CONTROL	10
TX POWER	11
TUNE VOLTS	12

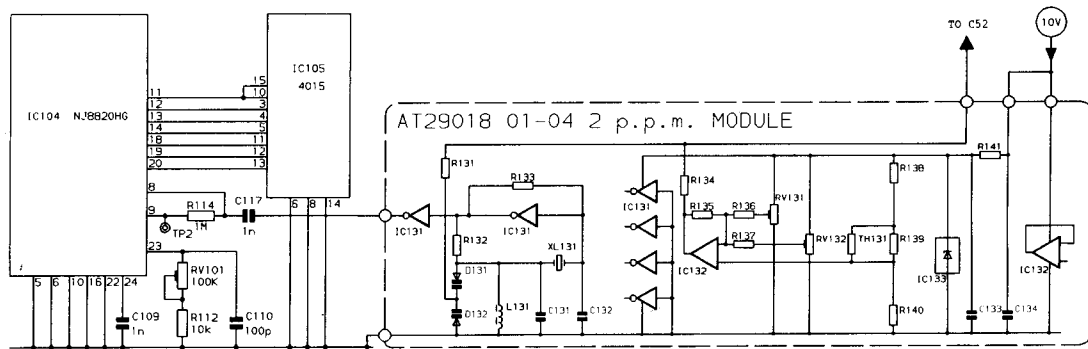
  

NOISE LEVEL	1
TX TEMP	2
CLOCK	3
DATA	4
RS51	5
POWER LEVEL	6
TX SIGNAL AUDIO	7
0V	8
RETURN AUDIO	9
LOUDSPEAKER	10
RX SIGNAL AUDIO	11
+13V6	12

FIG 6.12 ANALOGUE PWB CIRCUIT DIAGRAM

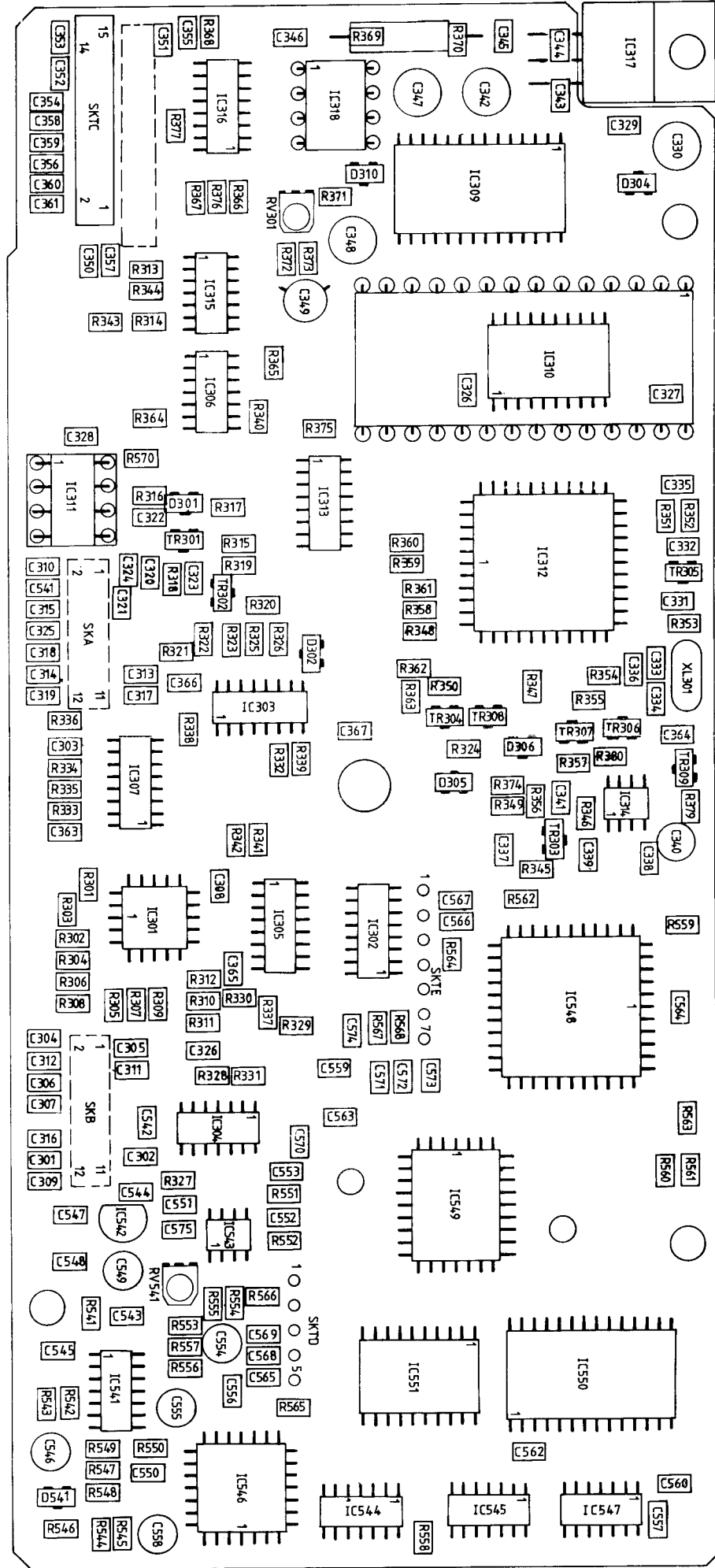
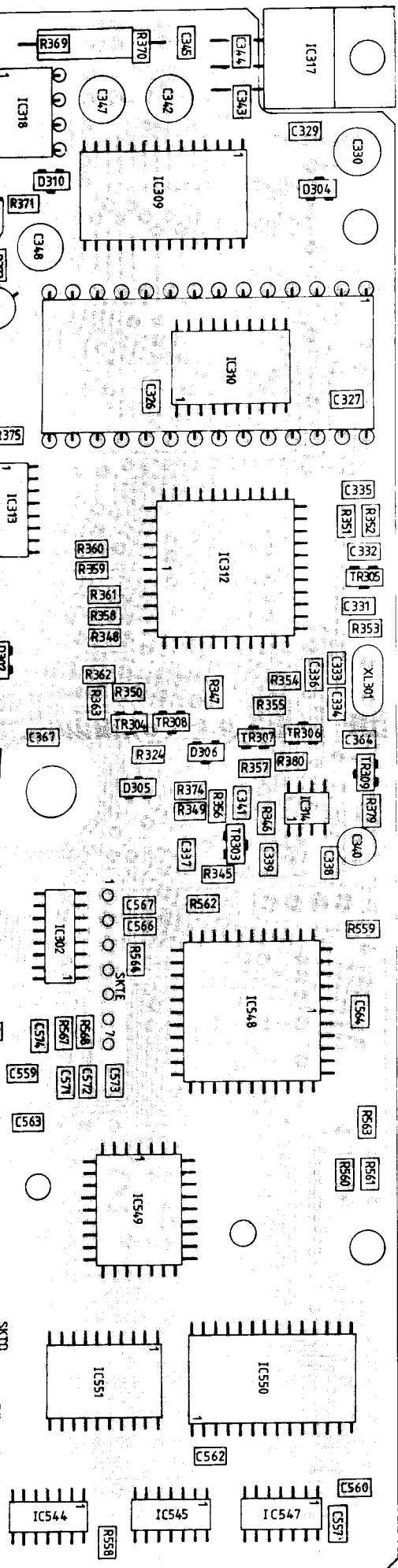


UHF PRESCALER (IC101)



±2ppm REFERENCE OSCILLATOR MODULE

FIG 6.13 ANALOGUE PWB CIRCUIT VARIATIONS



1	2	3	4	5	6	7	8	9	10	11	12	13
---	---	---	---	---	---	---	---	---	----	----	----	----



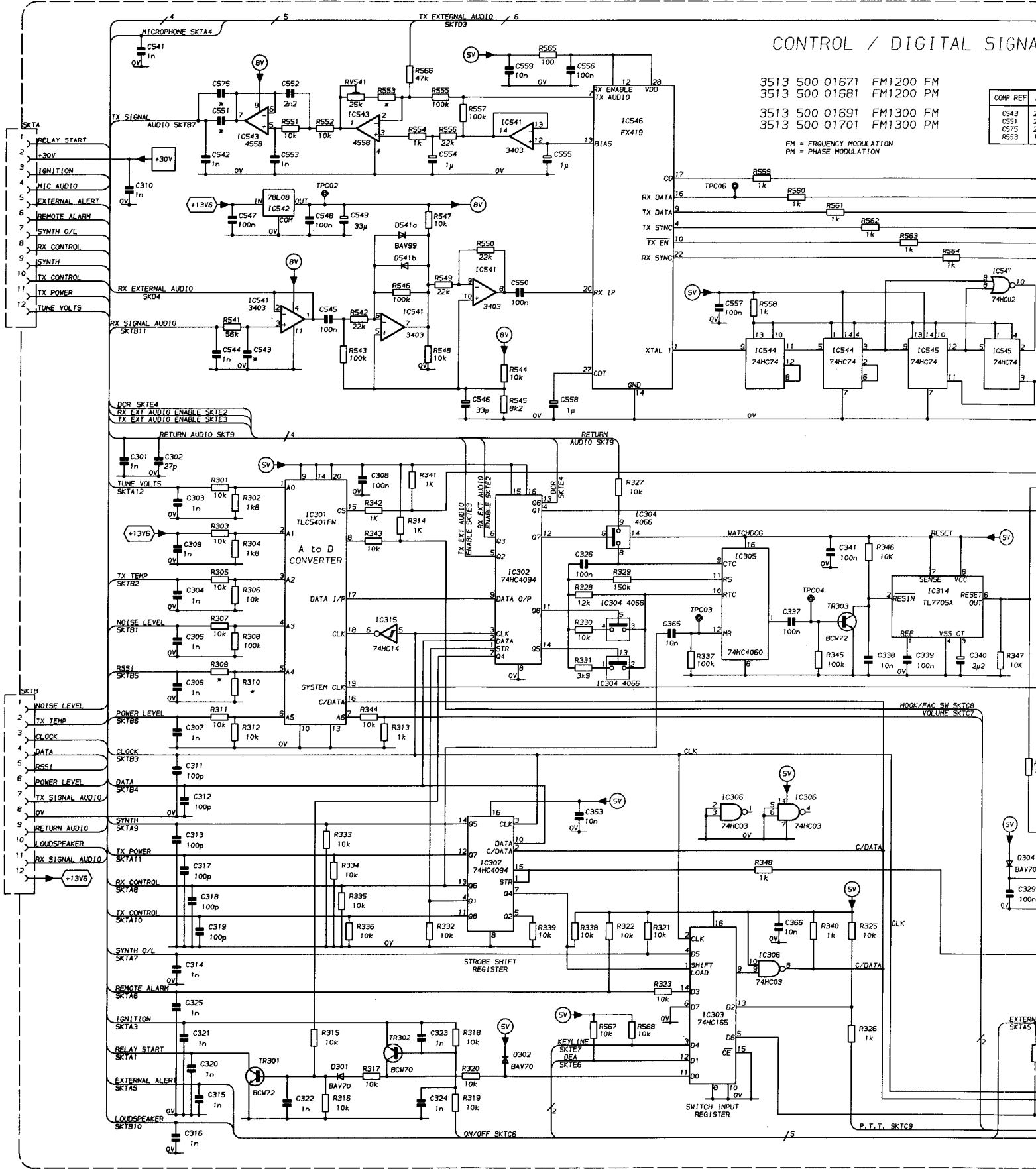


CONTROL / DIGITAL SIGNAL

3513 500 01671 FM1200 FM  
3513 500 01681 FM1200 PM  
3513 500 01691 FM1300 FM  
3513 500 01701 FM1300 PM

FM = FREQUENCY MODULATION  
PM = PHASE MODULATION

COMP REF	VALUE
C543	100n
C551	100n
C575	100n
R553	100k



# CONTROL / DIGITAL SIGNALLING ASSEMBLY

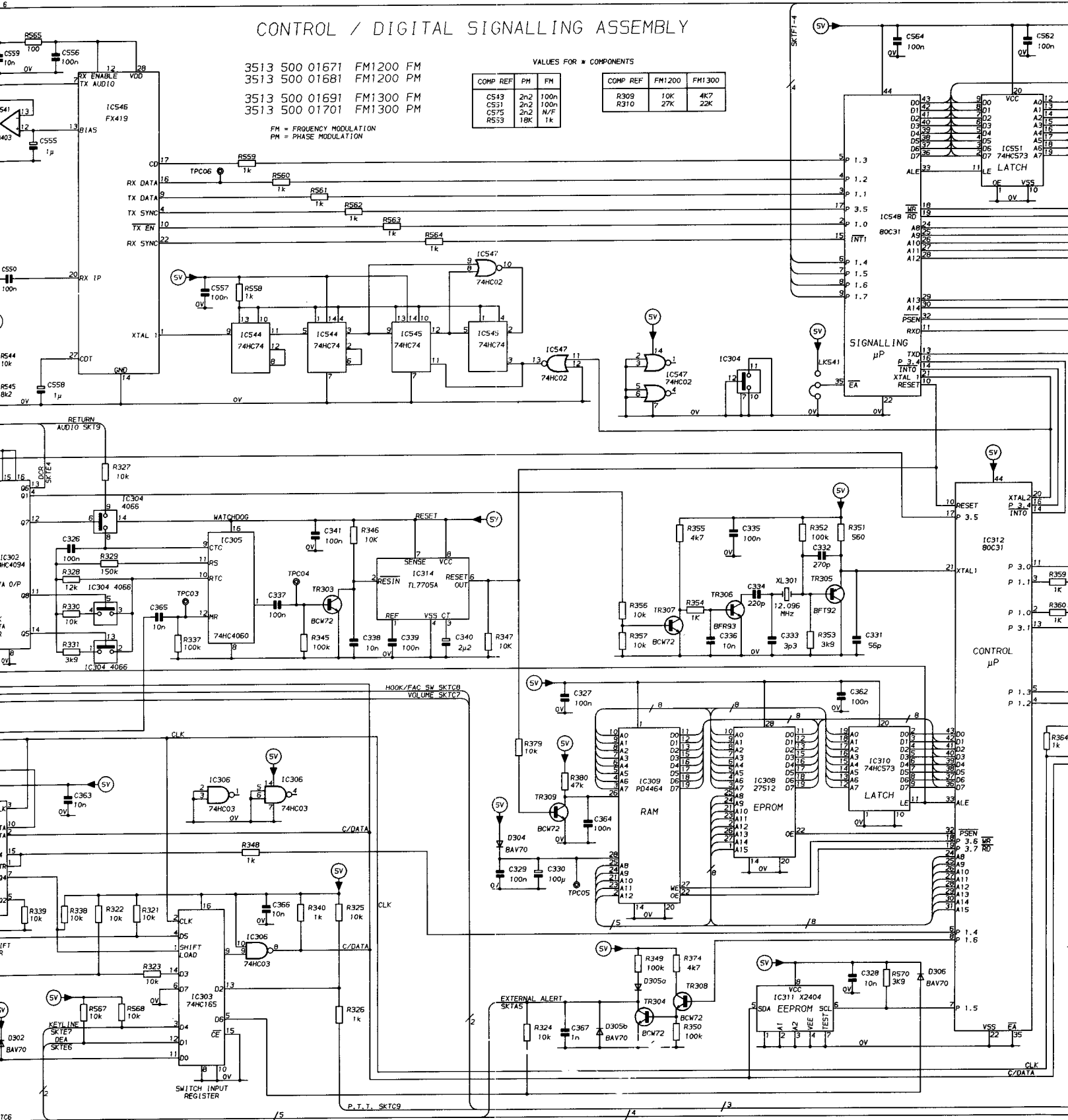
3513 500 01671 FM1200 FM  
 3513 500 01681 FM1200 PM  
 3513 500 01691 FM1300 FM  
 3513 500 01701 FM1300 PM

FM = FREQUENCY MODULATION  
 PM = PHASE MODULATION

VALUES FOR \* COMPONENTS

COMP REF	PM	FM
C543	2n2	100n
C531	2n2	100n
C575	2n2	N/F
R553	18k	1k

COMP REF	FM1200	FM1300
R309	10k	4k7
R310	27k	22k



# ALLING ASSEMBLY

VALUES FOR \* COMPONENTS

PM	FM	COMP REF	FM1200	FM1300
2n2	100n	R309	10K	4K7
2n2	100n	R310	27K	22K
2n2	N/F			
18K	1k			

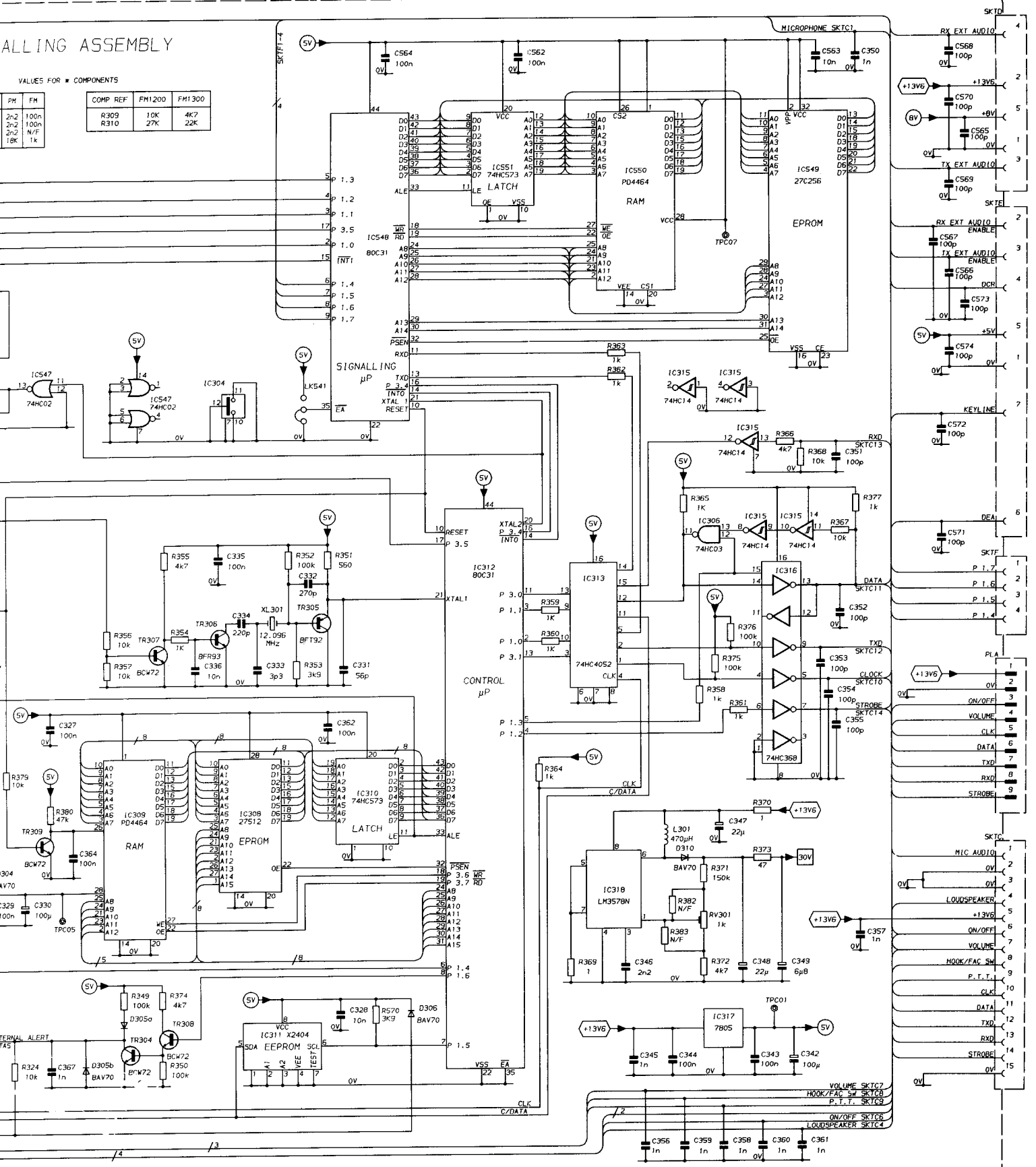
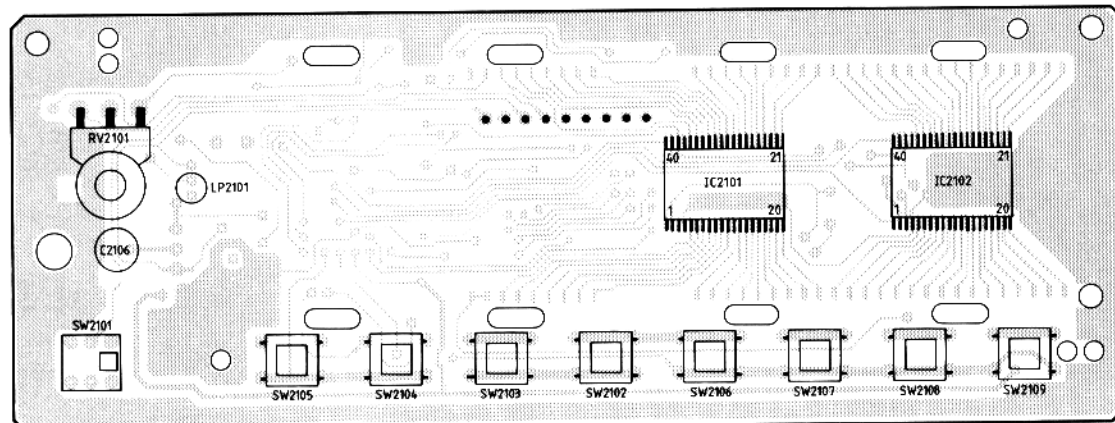
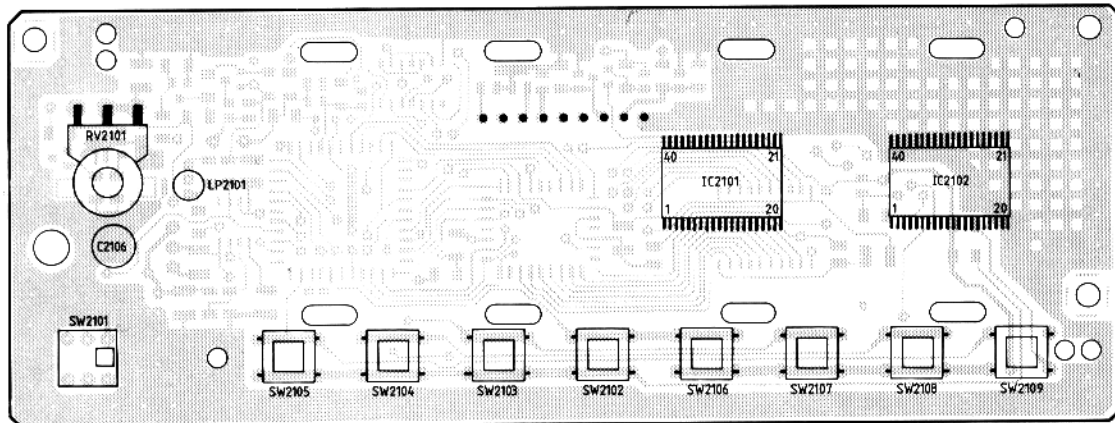
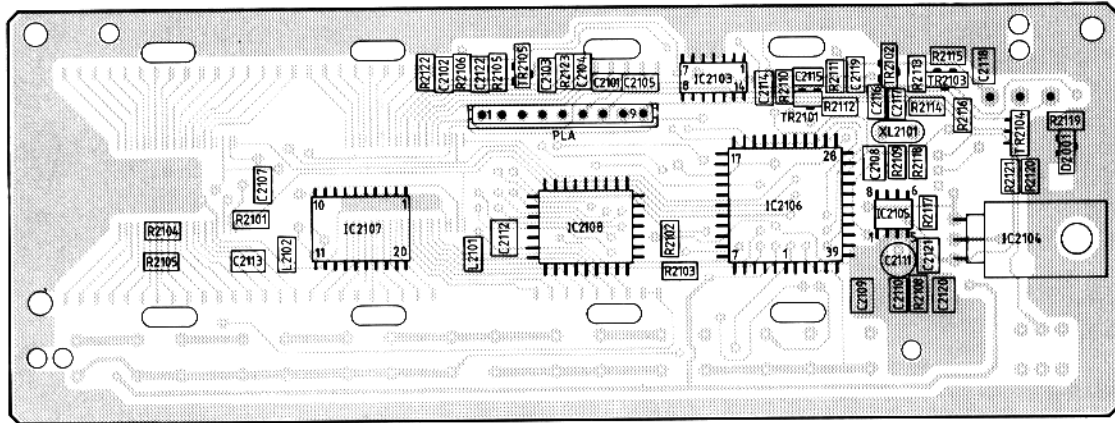
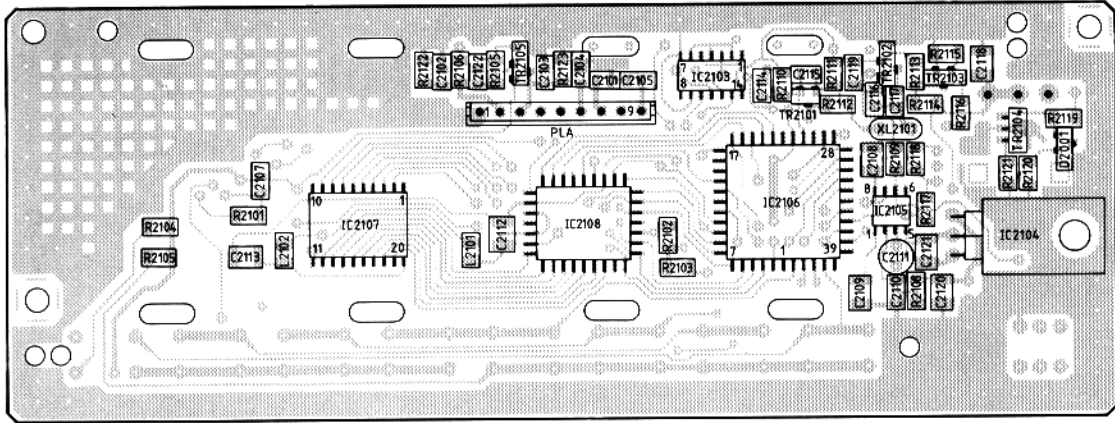
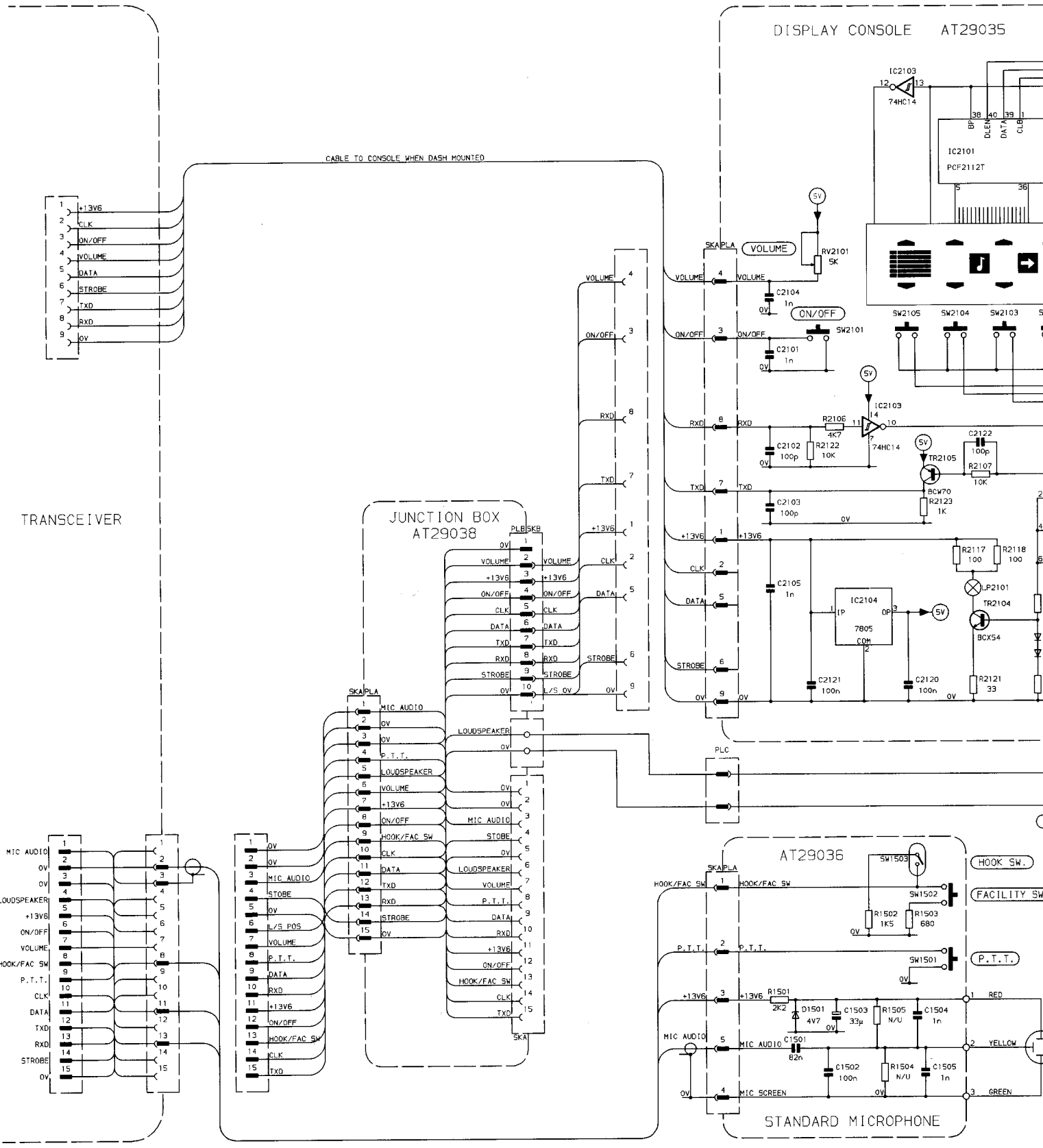


FIG 6.2 CONTROL/DIGITAL SIGNALLING PCB CIRCUIT DIAGRAM

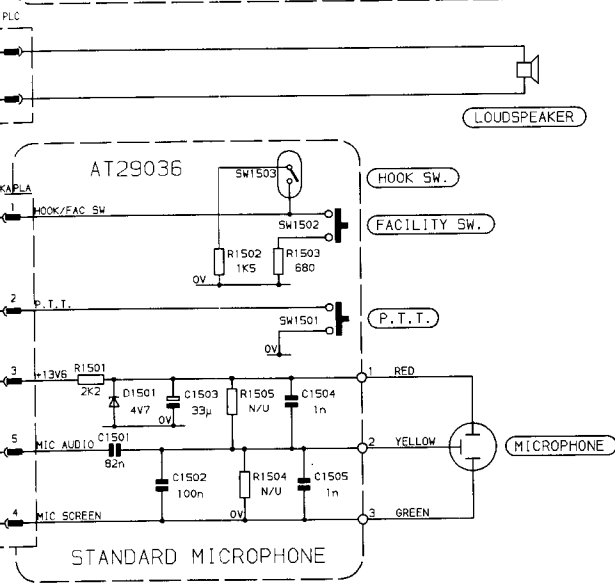
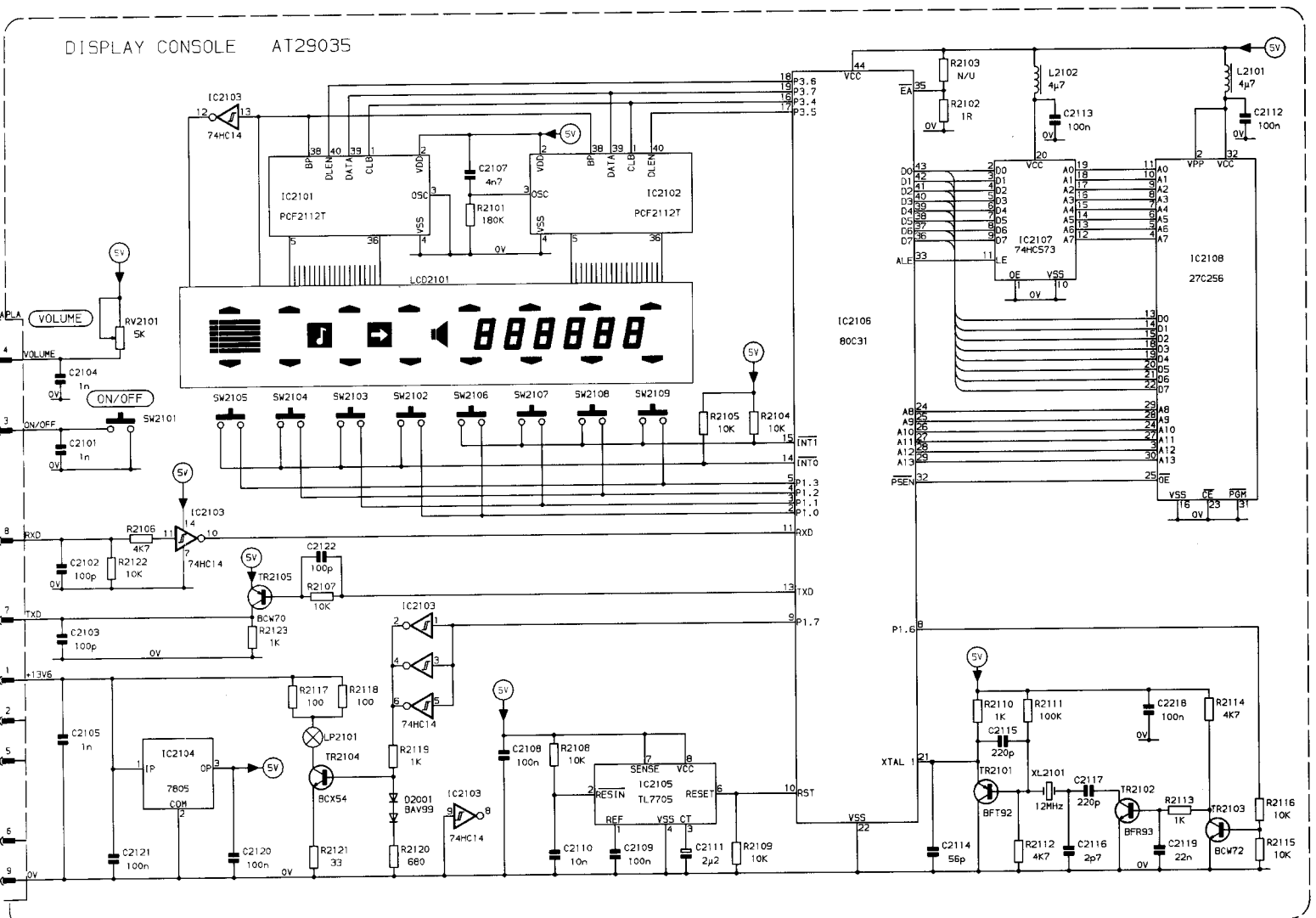


AT 54541

FIG 6.15 DISPLAY CONSOLE COMPONENT LOCATION DIAGRAM



DISPLAY CONSOLE AT29035

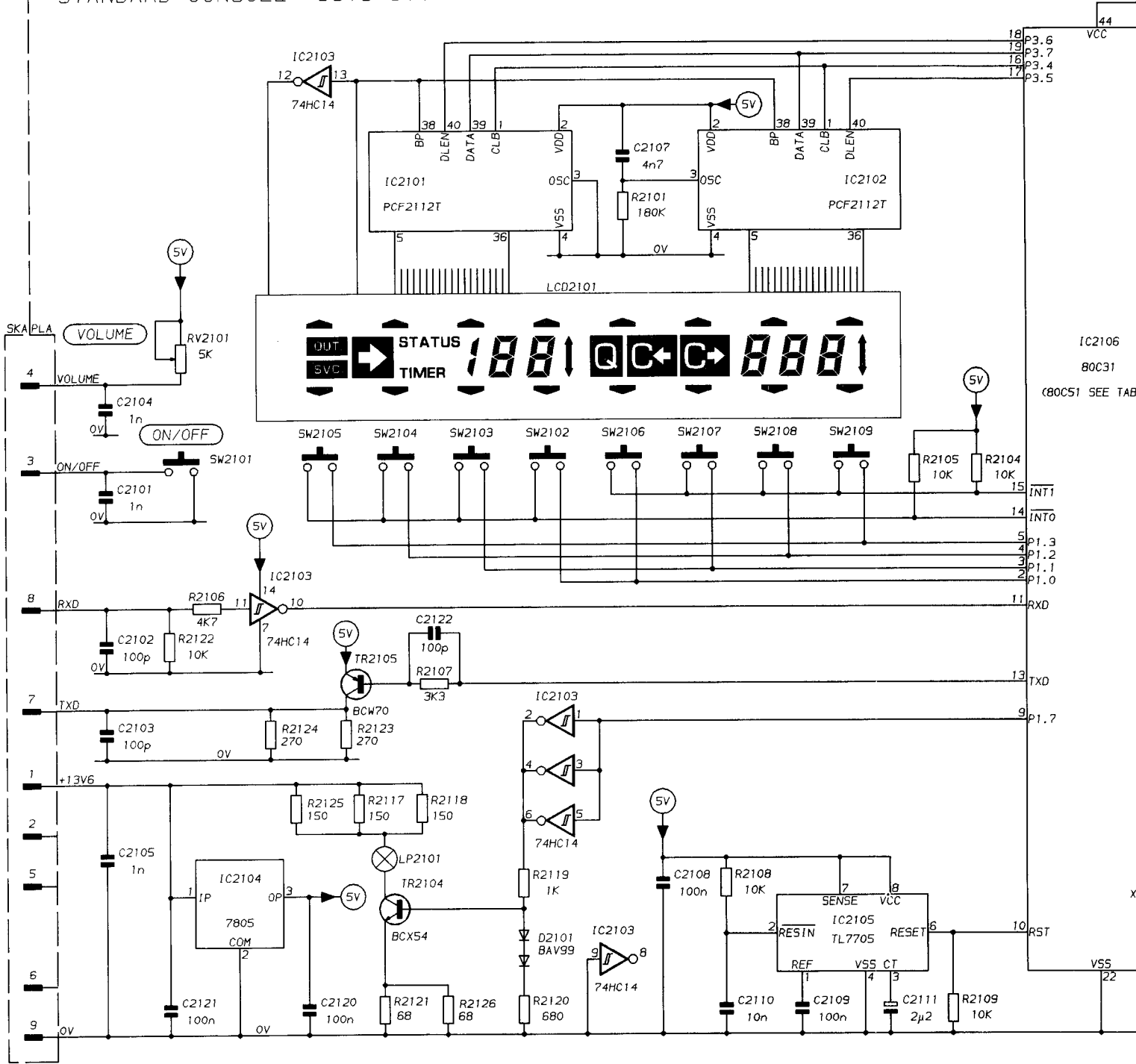


- NOTES
1. CONSOLE AND MICROPHONE SHOWN IN DASH MOUNT CONFIGURATION.
  2. LOUDSPEAKER SHOWN IN REMOTE MOUNT CONFIGURATION.

FIG 6.16 DISPLAY CONSOLE & JUNCTION BOX CIRCUIT DIAGRAM



STANDARD CONSOLE 3513 500 00702



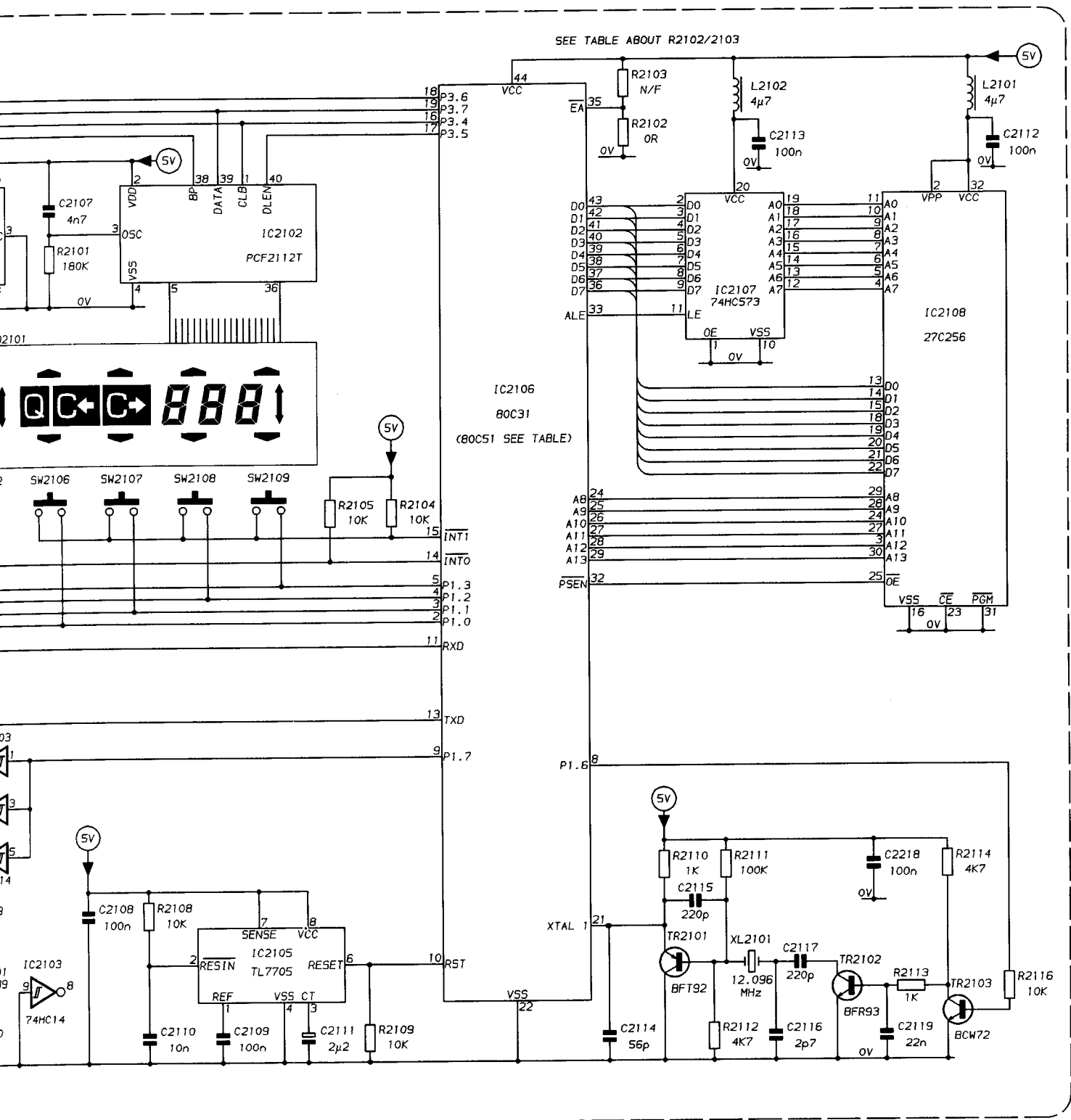
NOTES  
1. N/F = NOT FITTED

MEMORY ACCESS

IC2106 μP	MEMORY ACCESSED	IC2106 PIN 35	R2102	R2103	IC2107/2108
80C31	EXTERNAL	0V	FITTED	N/F	REQUIRED
80C51	EXTERNAL (MASKED)	0V	FITTED	N/F	REQUIRED
80C51	INTERNAL (MASKED)	5V	N/F	FITTED	NOT REQUIRED (MAY BE FITTED)

FIG 6.6 FM1200/FM1300 STANDARD CONSOLE  
CIRCUIT DIAGRAM





MEMORY ACCESS

IC2106 μP	MEMORY ACCESSED	IC2106 PIN 35	R2102	R2103	IC2107/2108
80C31	EXTERNAL	0V	FITTED	N/F	REQUIRED
80C51	EXTERNAL	0V	FITTED	N/F	REQUIRED
80C51	INTERNAL (MASKED)	5V	N/F	FITTED	NOT REQUIRED (MAY BE FITTED)





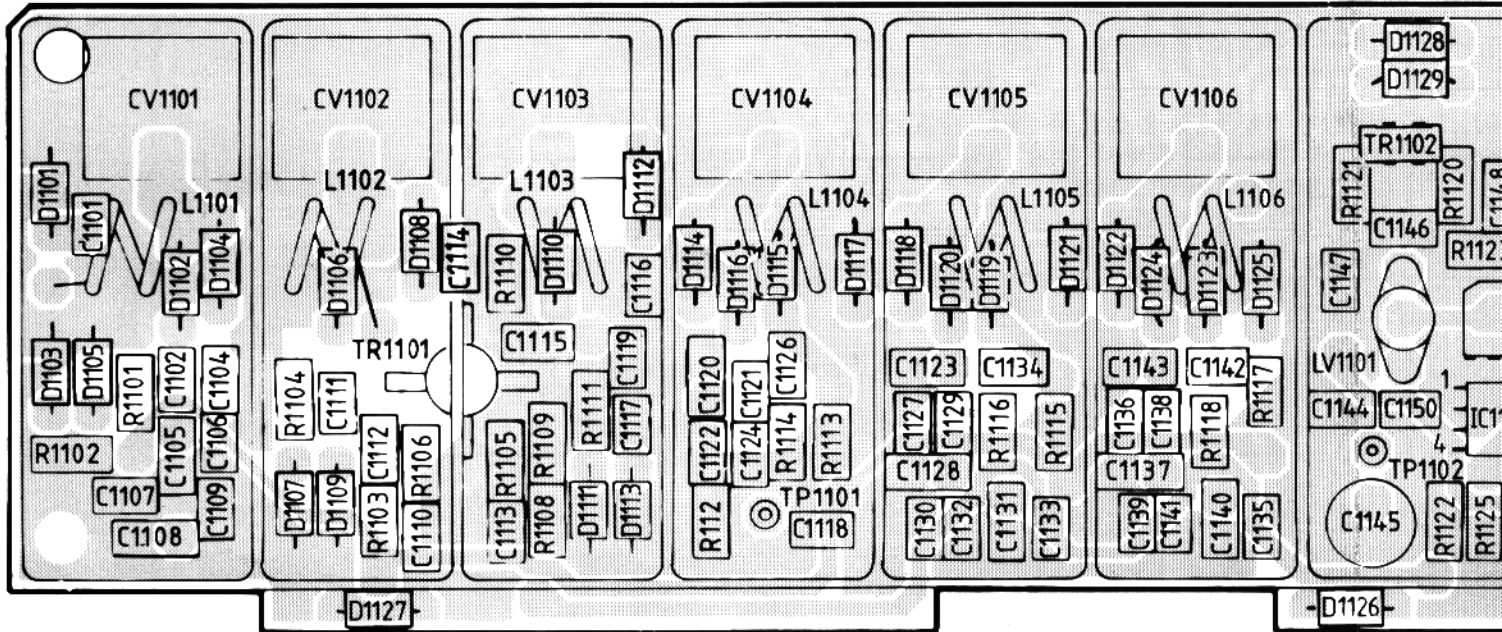
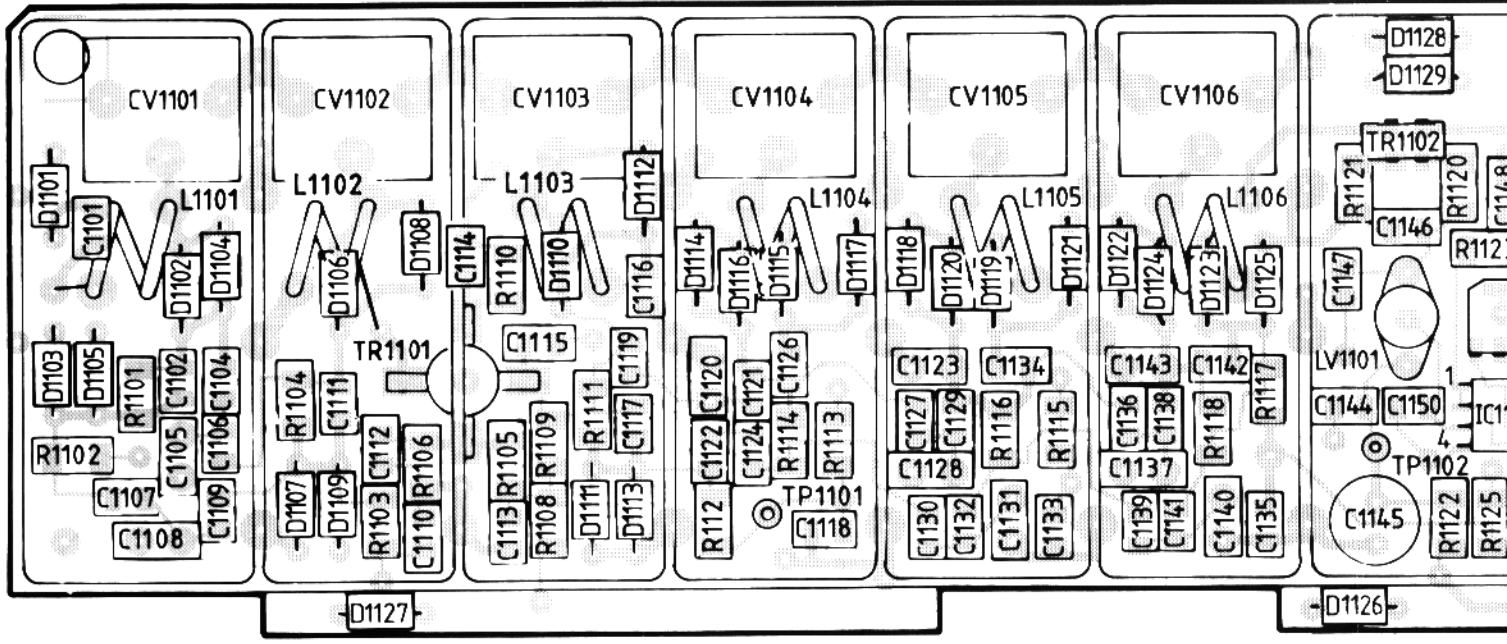
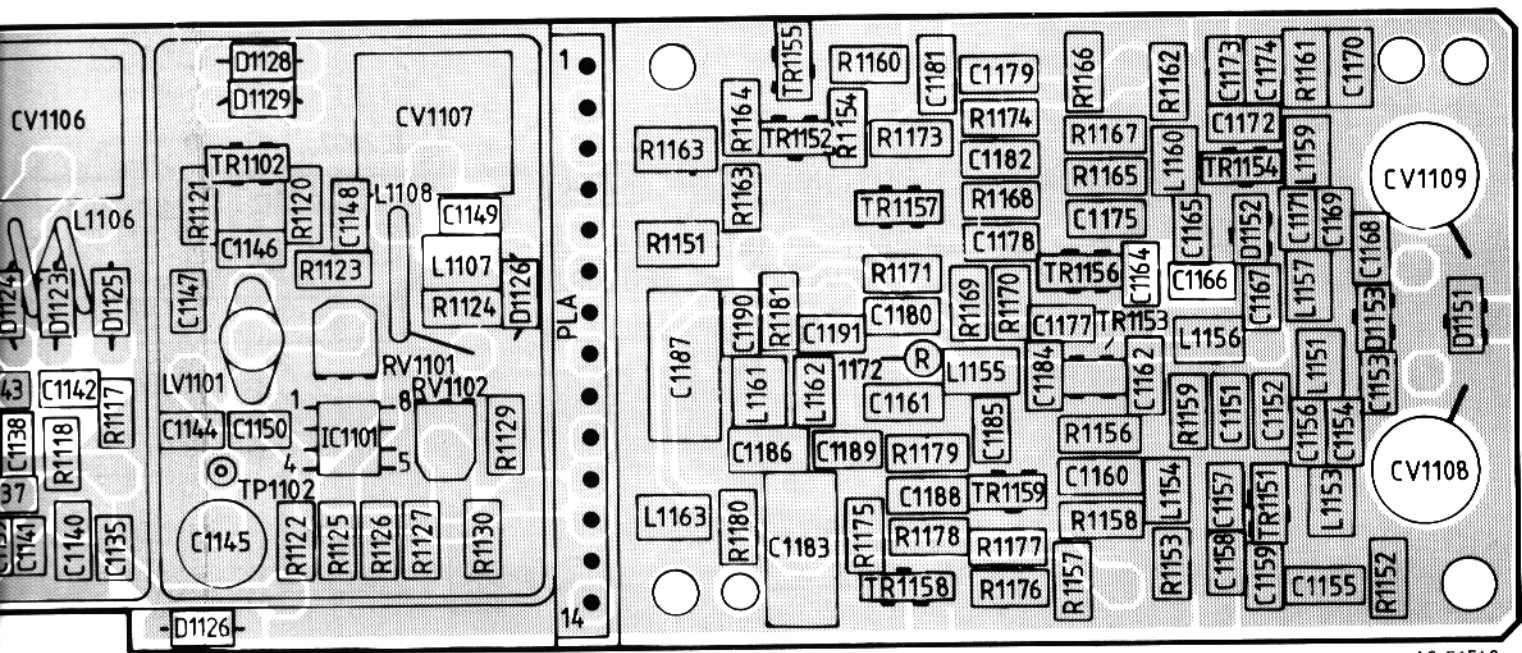
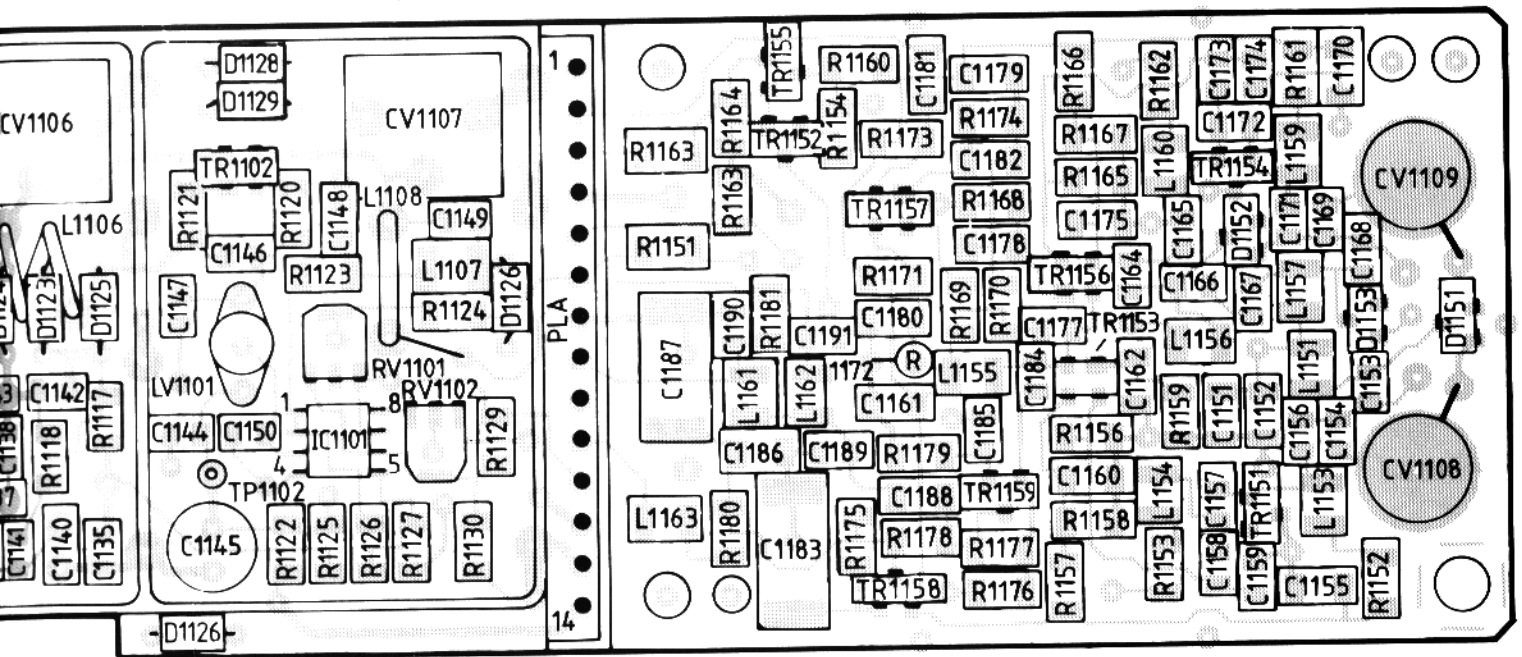


FIG 6.20 Rx VCO COMPONENT LOCATION DIAGRAM (400-512MHz)



A2 E6548

LOCATION  
(Hz)

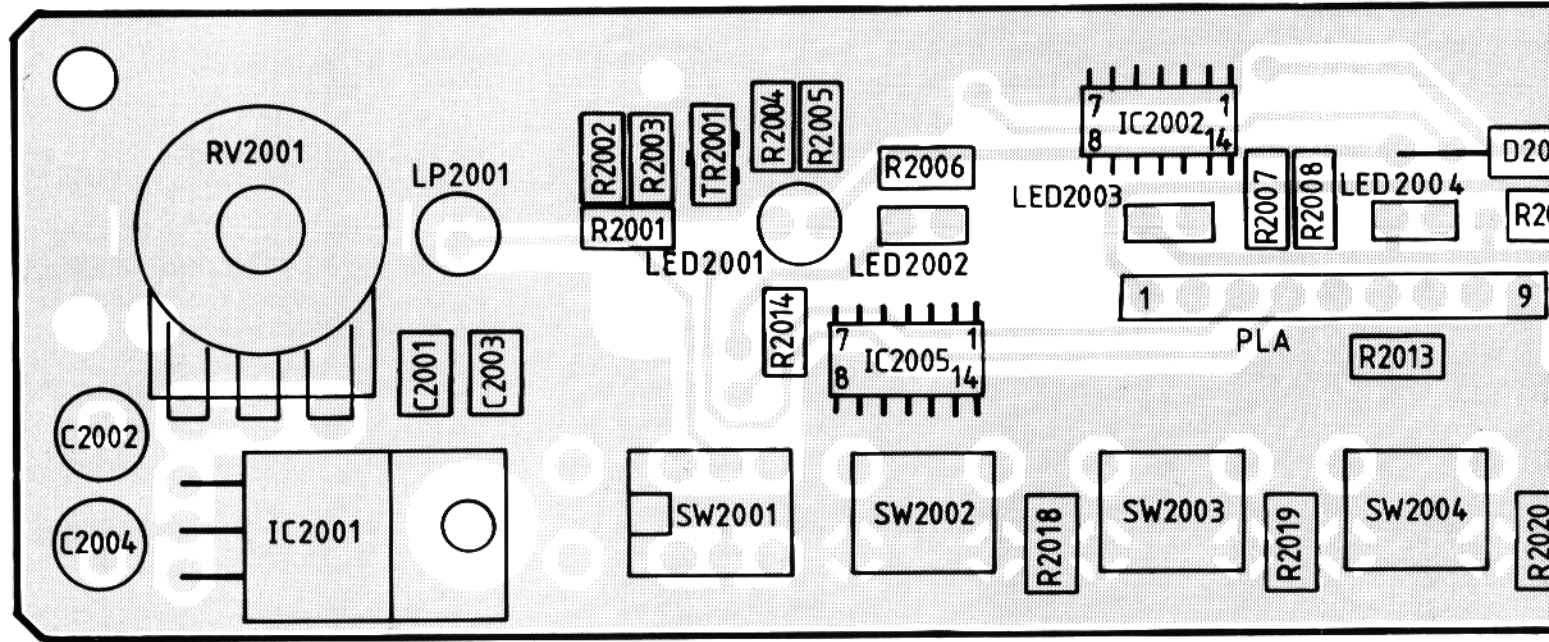
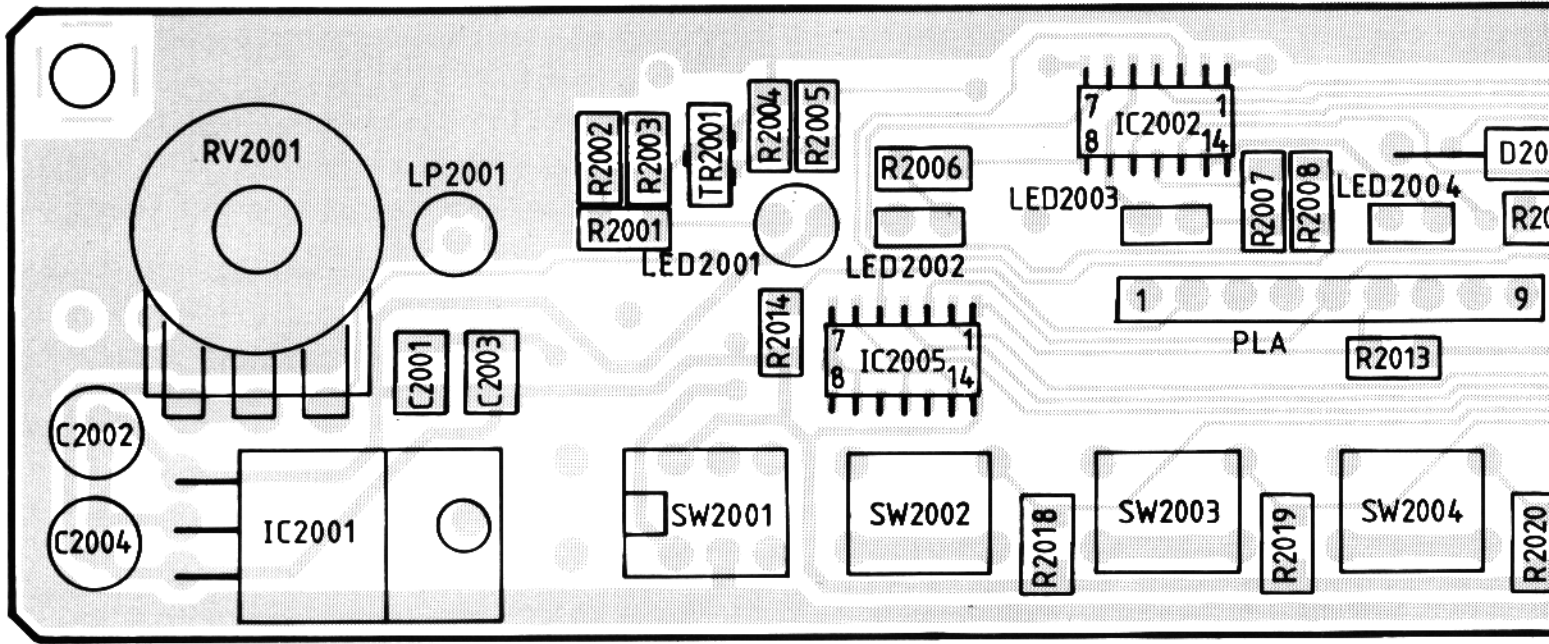
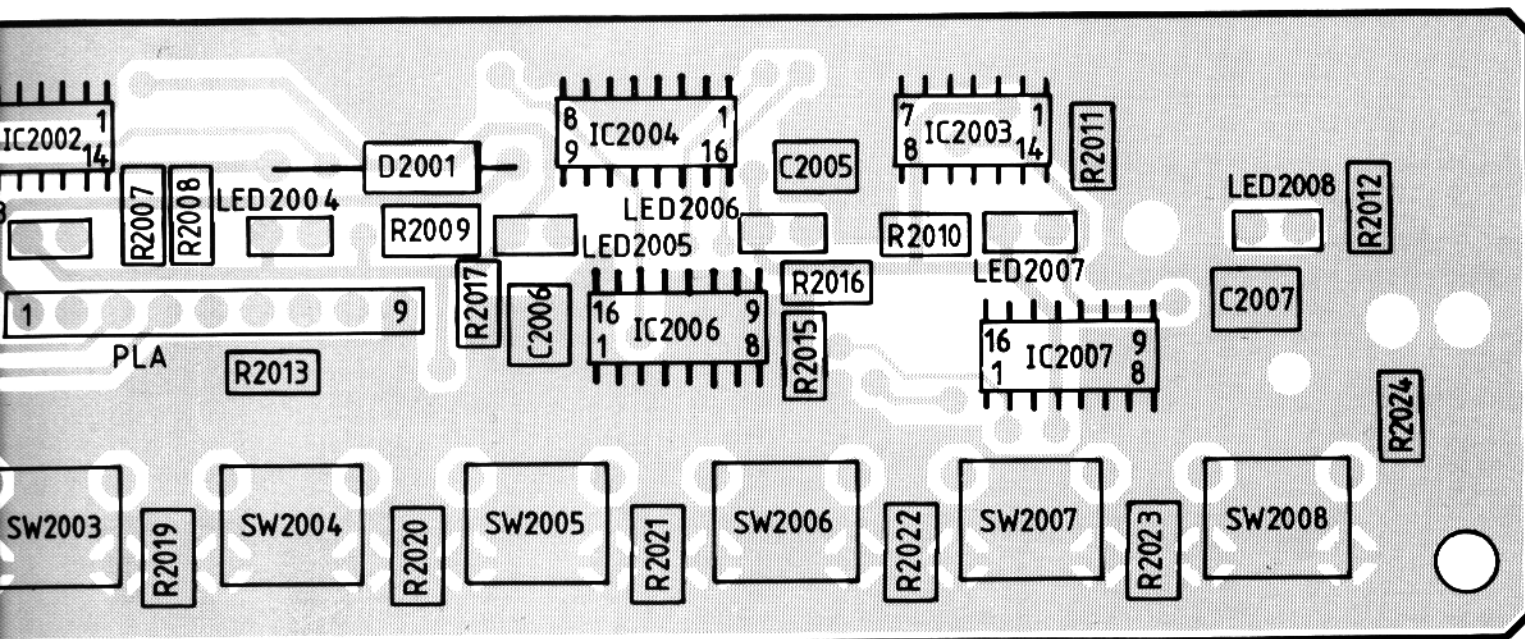
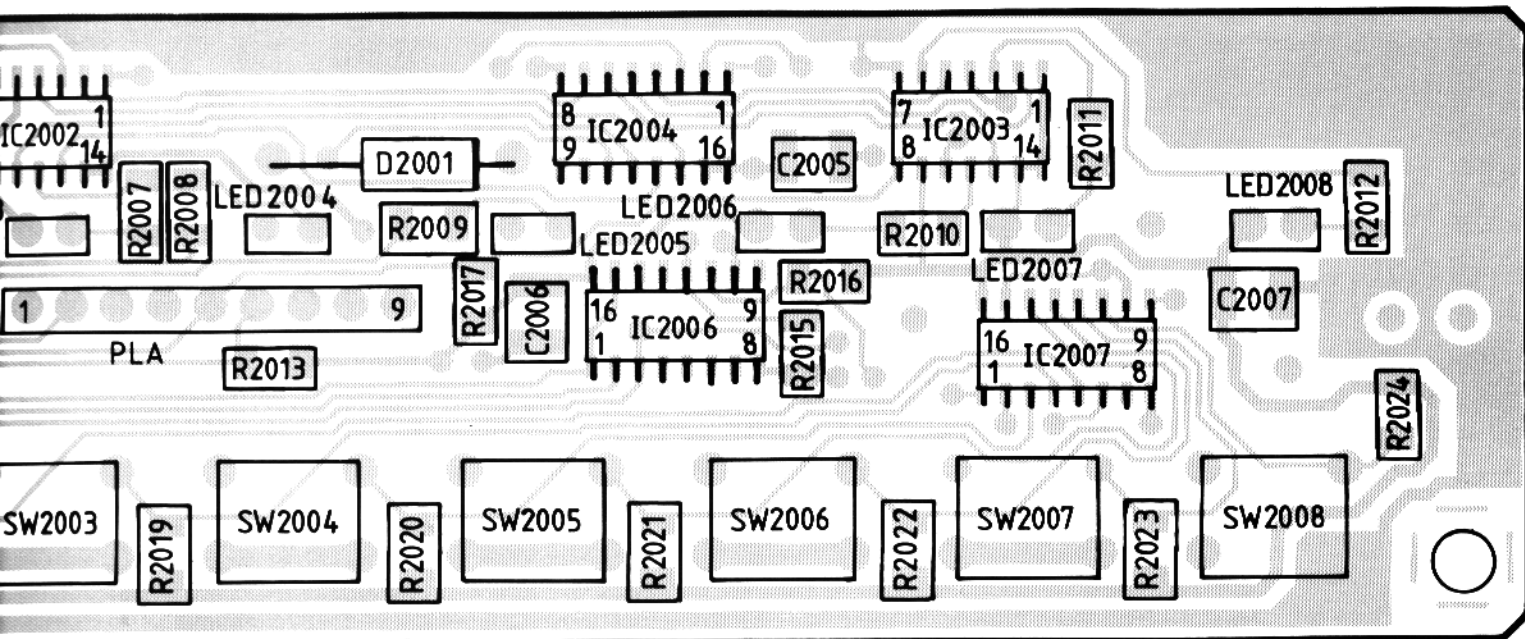
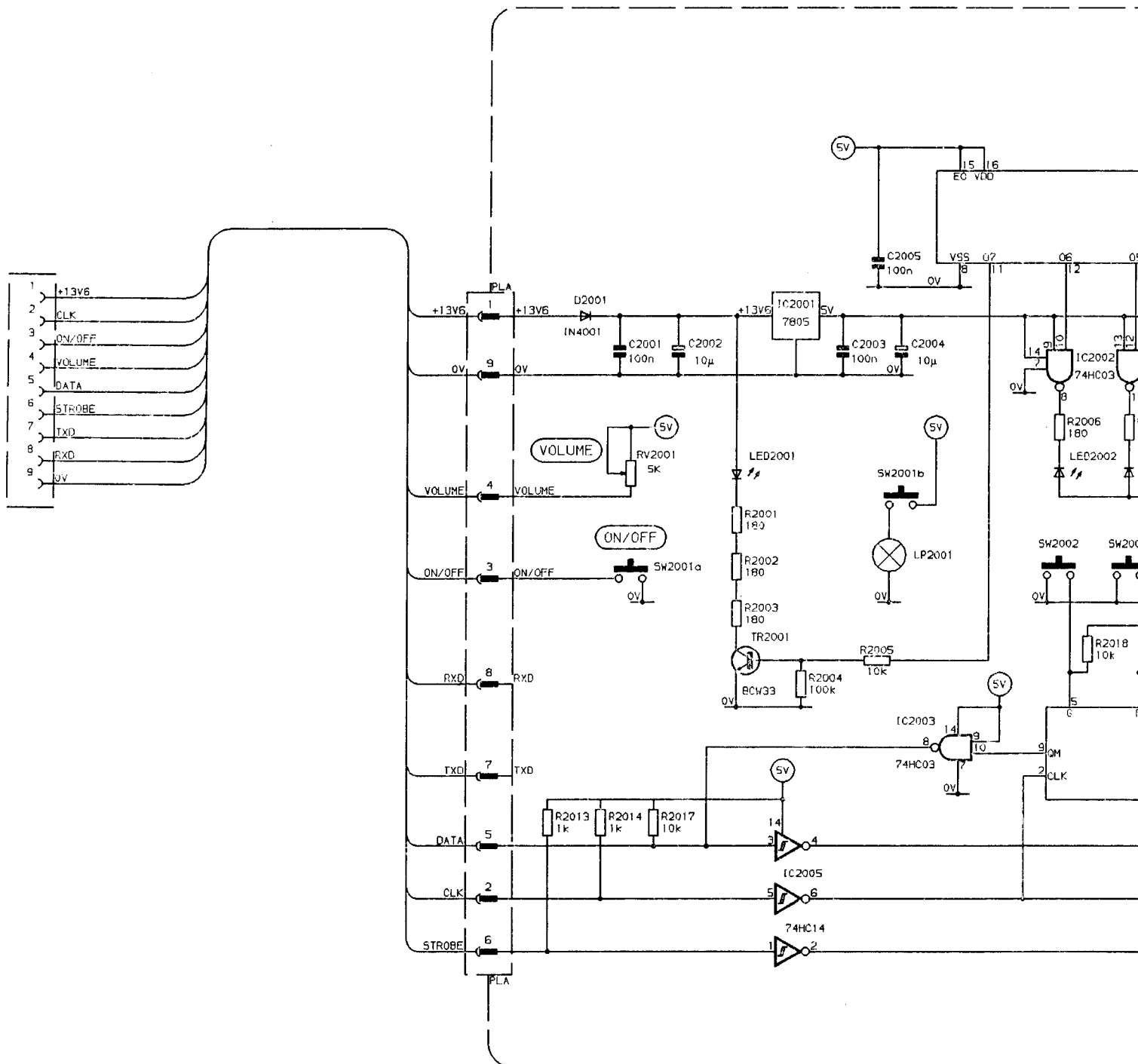


FIG 6.21

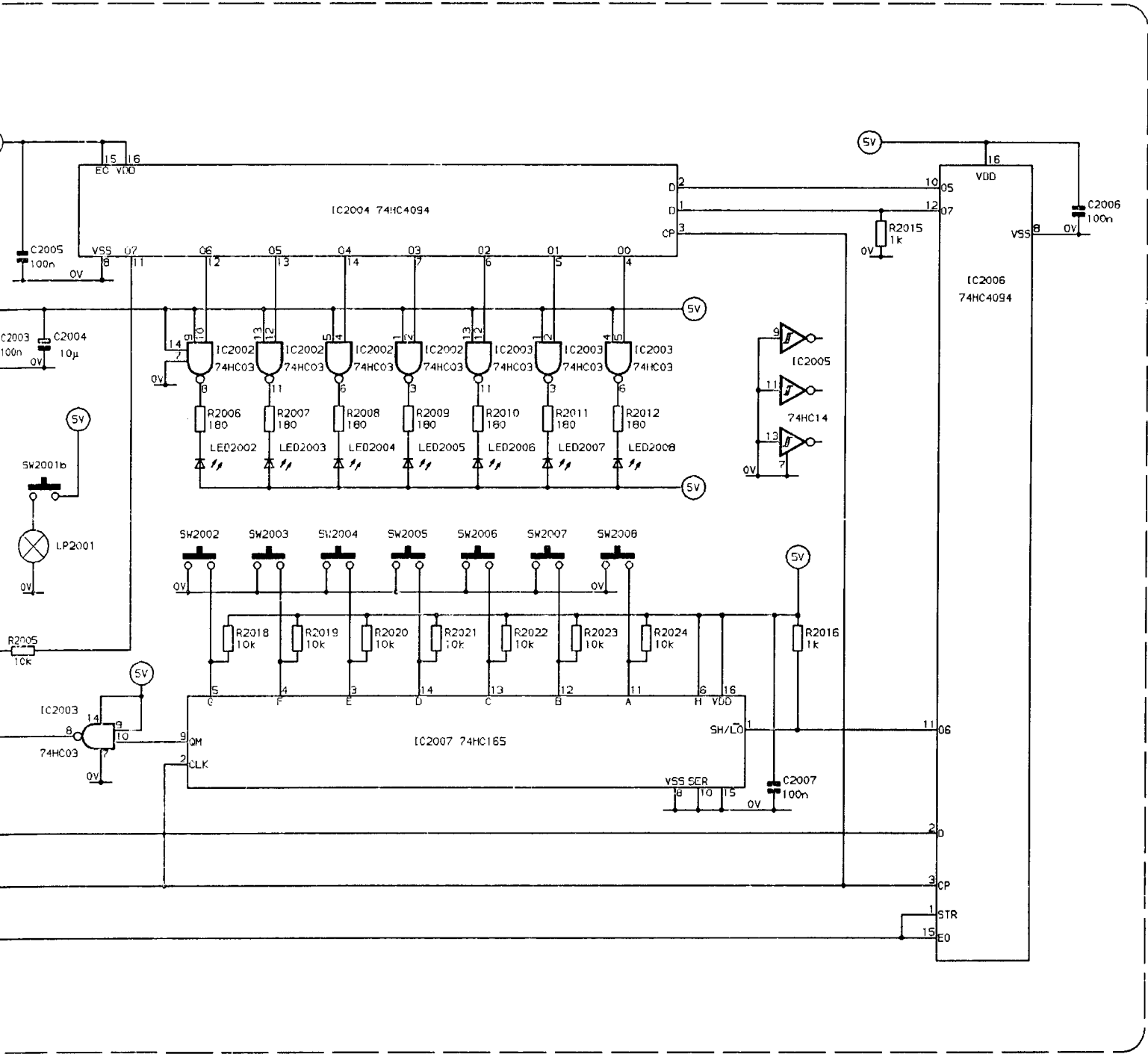


A2 E6549

FIG 6.21 BASIC CONSOLE COMPONENT LOCATION DIAGRAM







CONSOLE  
CIRCUIT DIAGRAM

KEYPAD / D.T.M.F. MICROPHONE

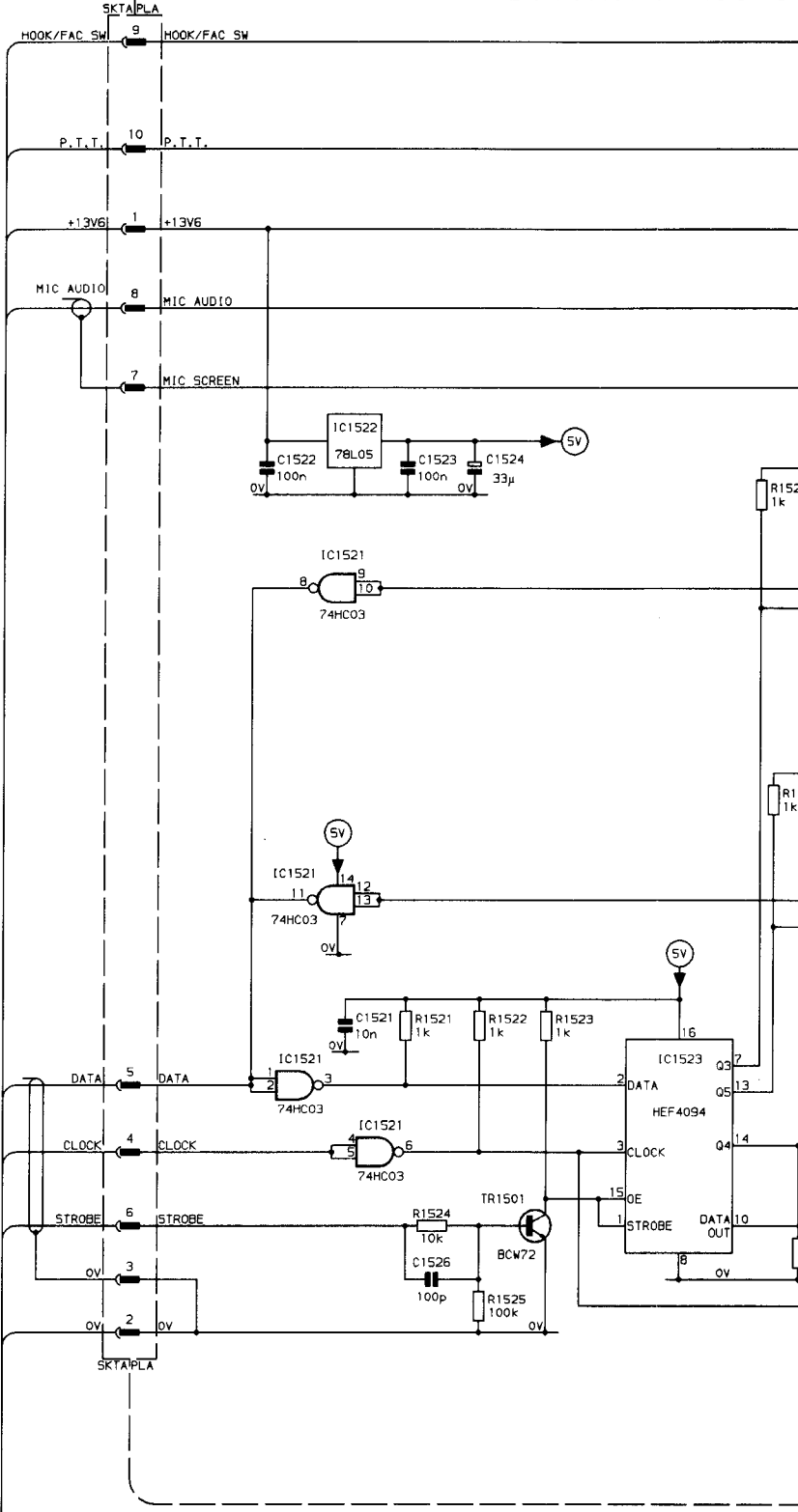
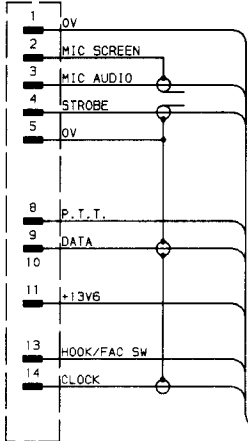


FIG 6.23 DTMF/KEYPAD MICROPHONE CIRCUIT DIAGRAM